

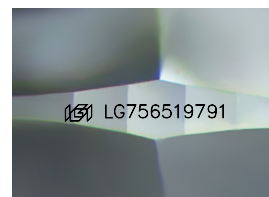
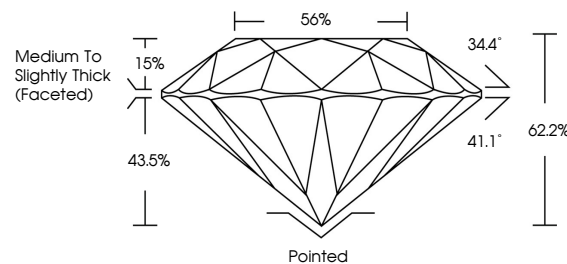


ELECTRONIC COPY

LABORATORY GROWN DIAMOND REPORT

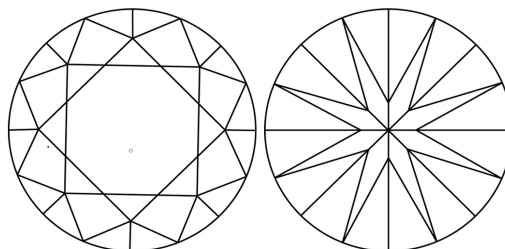
LG756519791
Report verification at [igi.org](https://www.igi.org)

PROPORTIONS



Sample Image Used

CLARITY CHARACTERISTICS



KEY TO SYMBOLS

Red symbols indicate internal characteristics.
Green symbols indicate external characteristics.

COLOR

D E F G H I J Faint Very Light Light

CLARITY

FL	IF	VVS ¹⁻²	VS ¹⁻²	SI ¹⁻²	I ¹⁻³
Flawless	Internally Flawless	Very Very Slightly Included	Very Slightly Included	Slightly Included	Included

LABORATORY GROWN DIAMOND REPORT



December 19, 2025

IGI Report Number **LG756519791**Description **LABORATORY GROWN DIAMOND**Shape and Cutting Style **ROUND BRILLIANT**

Measurements	8.08 - 8.14 X 5.04 MM
--------------	-----------------------

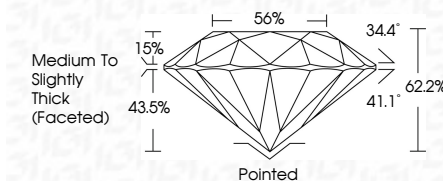
GRADING RESULTS

Carat Weight 2.04 CARATS

Color Grade

Clarity Grade WS 2

Cut Grade **IDEAL**



ADDITIONAL GRADING INFORMATION

Polish **EXCELLENT**Symmetry **EXCELLENT**Fluorescence **NONE**Inscription(s) LG756519791

Comments: This Laboratory Grown Diamond was created by Chemical Vapor Deposition (CVD) growth process.
Type IIa



© IGI 2020, International Gemological Institute

FD - 10 20

www.igi.org



THIS DOCUMENT WAS PRODUCED WITH THE FOLLOWING SECURITY MEASURES: SPECIAL DOCUMENT PAPER, INK SCREENS, WATERMARK, BACKGROUND DESIGNS, HOLOGRAM, AND OTHER SECURITY FEATURES NOT LISTED AND DO EXCEED DOCUMENT SECURITY INDUSTRY GUIDELINES.

December 19, 2025
 IGI Report No LG756519791
 ROUND BRILLIANT

ROUND BRILLIANT	0.08 - 0.14 5.04 MM	2.04 CARATS	VVS 2	Medium to Slightly Thick Faceted	Pointed	EXCELLENT	EXCELLENT	NONE	VERY GOOD
	Carat Weight	IDEAL	62.2%		56%				
	Color Grade	E							
	Clarity Grade	VVS 2							
	Cut Grade	IDEAL							
	Depth								
	Table								
	Grades								
	Culet								
	Polish								
	Symmetry								
	Fluorescence								

Comments:
This Laboratory Grown Diamond was
created by Chemical Vapor Deposition
(CVD) growth process.