



ELECTRONIC COPY

LABORATORY GROWN DIAMOND REPORT

| | |
|-------------------------|--------------------------|
| December 9, 2025 | |
| IGI Report Number | LG756515404 |
| Description | LABORATORY GROWN DIAMOND |
| Shape and Cutting Style | ROUND BRILLIANT |
| Measurements | 7.38 - 7.41 X 4.54 MM |

GRADING RESULTS

| | |
|---------------|------------|
| Carat Weight | 1.52 CARAT |
| Color Grade | E |
| Clarity Grade | VVS 1 |
| Cut Grade | IDEAL |

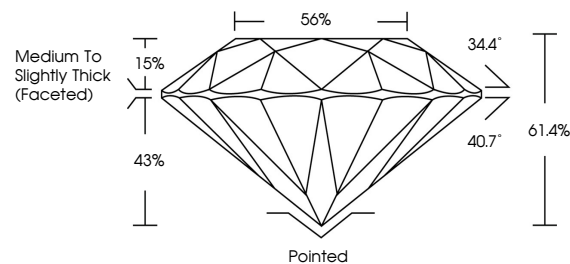
ADDITIONAL GRADING INFORMATION

| | |
|----------------|---|
| Polish | EXCELLENT |
| Symmetry | EXCELLENT |
| Fluorescence | NONE |
| Inscription(s) |  LG756515404 |

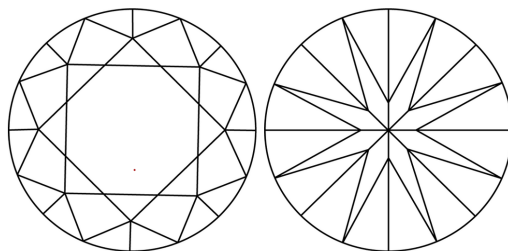
Comments: As Grown - No indication of post-growth treatment.
This Laboratory Grown Diamond was created by High Pressure High Temperature (HPHT) growth process.
Type II

LG756515404
Report verification at lgi.org

PROPORTIONS

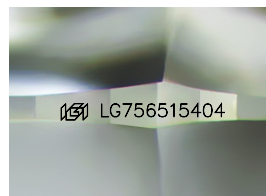


CLARITY CHARACTERISTICS



KEY TO SYMBOLS

Red symbols indicate internal characteristics.
Green symbols indicate external characteristics.



Sample Image Used

COLOR

D E F G H I J Faint Very Light Light

CLARITY

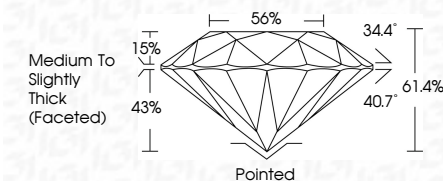
| FL | IF | VVS ¹⁻² | VS ¹⁻² | SI ¹⁻² | I ¹⁻³ |
|----------|---------------------|-----------------------------|------------------------|-------------------|------------------|
| Flawless | Internally Flawless | Very Very Slightly Included | Very Slightly Included | Slightly Included | Included |



| | |
|-------------------------|--------------------------|
| December 9, 2025 | |
| IGI Report Number | LG756515404 |
| Description | LABORATORY GROWN DIAMOND |
| Shape and Cutting Style | ROUND BRILLIANT |
| Measurements | 7.38 - 7.41 X 4.54 MM |

GRADING RESULTS

| | |
|---------------|------------|
| Carat Weight | 1.52 CARAT |
| Color Grade | E |
| Clarity Grade | VVS 1 |
| Cut Grade | IDEAL |



ADDITIONAL GRADING INFORMATION

| | |
|--|----------------------------|
| Polish | EXCELLENT |
| Symmetry | EXCELLENT |
| Fluorescence | NONE |
| Inscription(s) | (G) LG756515404 |
| Comments: As Grown - No indication of post-growth treatment. | |
| This Laboratory Grown Diamond was created by High Pressure High Temperature (HPHT) growth process. | |
| Type II | |



© IGI 2020, International Gemological Institute

FD - 10 20



THIS DOCUMENT WAS PRODUCED WITH THE FOLLOWING SECURITY MEASURES: SPECIAL DOCUMENT PAPER, INK SCREENS, WATERMARK, BACKGROUND DESIGNS, HOLOGRAM AND OTHER SECURITY FEATURES NOT LISTED AND DO EXCEED DOCUMENT SECURITY INDUSTRY GUIDELINES

www.igi.org

December 9, 2025
IGI Report No LG7566
ROUND BRILLIANT

| | |
|------------------------------|------------------------------------|
| 3.38 - 7.41 X 4.54 MM | |
| Carat Weight | 1.52 CARAT |
| Color Grade | E |
| Clarity Grade | VVS 1 |
| Cut Grade | IDEAL |
| Depth | 61.4% |
| Table | 56% |
| Girdle | Medium to Slightly Thick (Faceted) |
| Culet | Pointed |
| Polish | EXCELLENT |
| Symmetry | EXCELLENT |
| Fluorescence | NONE |
| Report # | 6011271561504 |

Comments:
As Grown - No Indication of post-growth treatment.
This Laboratory Grown Diamond was created by High Pressure High Temperature (HPHT) growth process.