



ELECTRONIC COPY

LG756513274
Report verification at igi.org



December 18, 2025

IGI Report Number **LG756513274**

Description **LABORATORY GROWN DIAMOND**

Shape and Cutting Style **SQUARE EMERALD CUT**

Measurements **6.25 X 6.20 X 4.17 MM**

GRADING RESULTS

Carat Weight **1.53 CARAT**

Color Grade **FANCY VIVID BLUE**

Clarity Grade **INTERNALLY FLAWLESS**

December 18, 2025
IGI Report Number **LG756513274**
Description **LABORATORY GROWN DIAMOND**
Shape and Cutting Style **SQUARE EMERALD CUT**
Measurements **6.25 X 6.20 X 4.17 MM**

GRADING RESULTS

Carat Weight **1.53 CARAT**

Color Grade **FANCY VIVID BLUE**

Clarity Grade **INTERNALLY FLAWLESS**

ADDITIONAL GRADING INFORMATION

Polish **EXCELLENT**

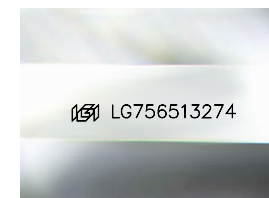
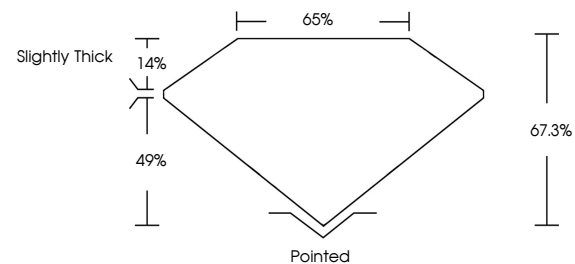
Symmetry **EXCELLENT**

Fluorescence **NONE**

Inscription(s) **IGI LG756513274**

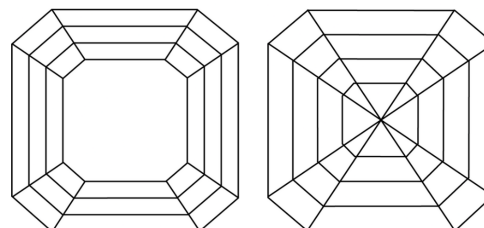
Comments: This Laboratory Grown Diamond was created by High Pressure High Temperature (HPHT) growth process. Indications of post-growth treatment.

PROPORTIONS



Sample Image Used

CLARITY CHARACTERISTICS



KEY TO SYMBOLS

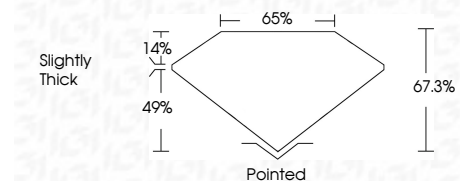
Red symbols indicate internal characteristics.
Green symbols indicate external characteristics.

COLOR

D E F G H I J Faint Very Light Light

CLARITY

FL	IF	VS ¹⁻²	VS ¹⁻²	SI ¹⁻²	I ¹⁻³
Flawless	Internally Flawless	Very Very Slightly Included	Very Slightly Included	Slightly Included	Included



ADDITIONAL GRADING INFORMATION

Polish **EXCELLENT**

Symmetry **EXCELLENT**

Fluorescence **NONE**

Inscription(s) **IGI LG756513274**

Comments: This Laboratory Grown Diamond was created by High Pressure High Temperature (HPHT) growth process. Indications of post-growth treatment.



IGI



December 18, 2025
IGI Report No LG756513274
SQUARE EMERALD CUT
1.53 CARAT
Carat Weight
Color Grade **FANCY VIVID BLUE**
Clarity Grade **IF**
Depth **67.3%**
Table **65%**
Girdle **Slightly Thick**
Culet **Pointed**
Polish **EXCELLENT**
Symmetry **EXCELLENT**
Fluorescence **NONE**
Inscription(s) **IGI LG756513274**
Comments: This Laboratory Grown Diamond was created by High Pressure High Temperature (HPHT) growth process. Indications of post-growth treatment.