



**ELECTRONIC COPY**

LG756512730  
Report verification at igi.org



December 17, 2025  
IGI Report Number **LG756512730**  
Description **LABORATORY GROWN DIAMOND**  
Shape and Cutting Style **CUT CORNERED  
RECTANGULAR MODIFIED  
BRILLIANT**  
Measurements **12.36 X 7.94 X 5.69 MM**  
**GRADING RESULTS**  
Carat Weight **5.31 CARATS**  
Color Grade **FANCY INTENSE GRAYISH  
YELLOW**  
Clarity Grade **VS 2**

December 17, 2025  
IGI Report Number **LG756512730**  
Description **LABORATORY GROWN DIAMOND**  
Shape and Cutting Style **CUT CORNERED RECTANGULAR  
MODIFIED BRILLIANT**  
Measurements **12.36 X 7.94 X 5.69 MM**

**GRADING RESULTS**

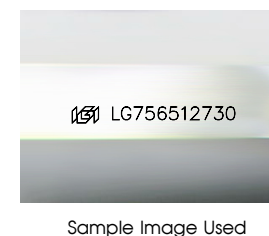
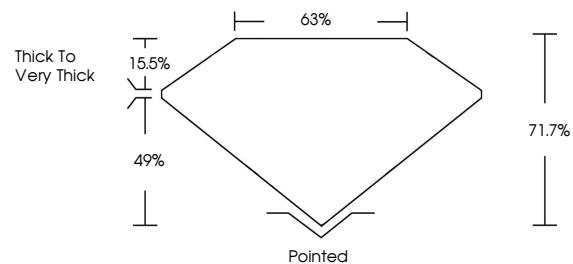
Carat Weight **5.31 CARATS**  
Color Grade **FANCY INTENSE GRAYISH  
YELLOW**  
Clarity Grade **VS 2**

**ADDITIONAL GRADING INFORMATION**

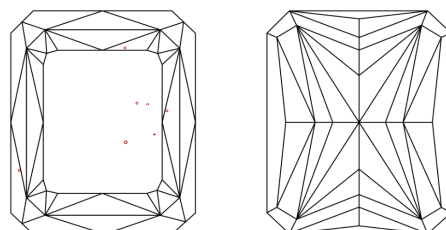
Polish **VERY GOOD**  
Symmetry **VERY GOOD**  
Fluorescence **NONE**  
Inscription(s) **IGI LG756512730**

Comments: This Laboratory Grown Diamond was created by Chemical Vapor Deposition (CVD) growth process.

**PROPORTIONS**



**CLARITY CHARACTERISTICS**



**KEY TO SYMBOLS**

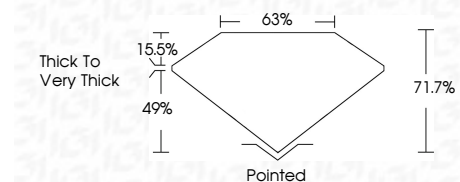
Red symbols indicate internal characteristics.  
Green symbols indicate external characteristics.

**COLOR**

D E F G H I J Faint Very Light Light

**CLARITY**

FL	IF	VS <sup>1-2</sup>	VS <sup>1-2</sup>	SI <sup>1-2</sup>	I <sup>1-3</sup>
Flawless	Internally Flawless	Very Very Slightly Included	Very Slightly Included	Slightly Included	Included



**ADDITIONAL GRADING INFORMATION**

Polish **VERY GOOD**  
Symmetry **VERY GOOD**  
Fluorescence **NONE**  
Inscription(s) **IGI LG756512730**  
Comments: This Laboratory Grown Diamond was created by Chemical Vapor Deposition (CVD) growth process.



December 17, 2025  
IGI Report No LG756512730  
CUT CORNERED RECT. MODIFIED BRILLIANT  
5.31 CARATS  
FANCY INTENSE GRAYISH YELLOW  
VS 2  
12.36 X 7.94 X 5.69 MM  
71.7%  
63%  
Thick to Very Thick  
Pointed  
Polish VERY GOOD  
Symmetry VERY GOOD  
Fluorescence NONE  
Inscription(s) IGI LG756512730  
Comments: This Laboratory Grown Diamond was created by Chemical Vapor Deposition (CVD) growth process.