



ELECTRONIC COPY

LG756512700
Report verification at igi.org



December 16, 2025

IGI Report Number **LG756512700**

Description **LABORATORY GROWN DIAMOND**

Shape and Cutting Style **CUT CORNERED
RECTANGULAR MODIFIED
BRILLIANT**

Measurements **15.93 X 10.65 X 6.85 MM**

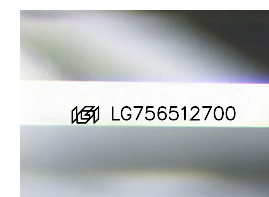
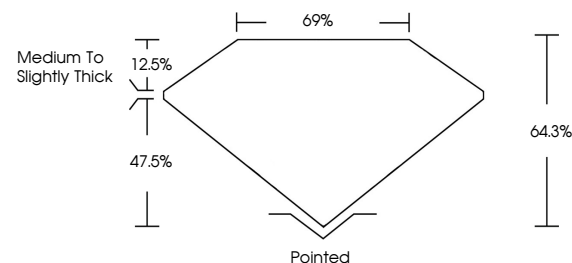
GRADING RESULTS

Carat Weight **10.06 CARATS**

Color Grade **F**

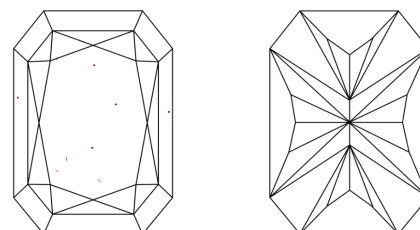
Clarity Grade **VVS 2**

PROPORTIONS



Sample Image Used

CLARITY CHARACTERISTICS



KEY TO SYMBOLS

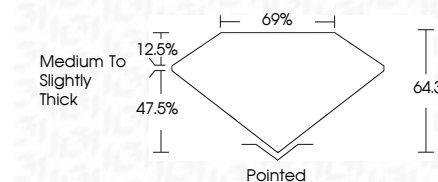
Red symbols indicate internal characteristics.
Green symbols indicate external characteristics.

COLOR

D E F G H I J Faint Very Light Light

CLARITY

FL	IF	VVS ¹⁻²	VS ¹⁻²	SI ¹⁻²	I ¹⁻³
Flawless	Internally Flawless	Very Very Slightly Included	Very Slightly Included	Slightly Included	Included



ADDITIONAL GRADING INFORMATION

Polish **EXCELLENT**

Symmetry **EXCELLENT**

Fluorescence **NONE**

Inscription(s) **IGI LG756512700**

Comments: This Laboratory Grown Diamond was created by Chemical Vapor Deposition (CVD) growth process. Type IIa



IGI



December 16, 2025
IGI Report No LG756512700
CUT CORNERED RECT. MODIFIED BRILLIANT

15.93 X 10.65 X 6.85 MM
10.06 CARATS
F
VVS 2
64.3%
69%

Medium to Slightly Thick
Pointed
EXCELLENT
EXCELLENT
NONE
IGI LG756512700

Comments: This Laboratory Grown Diamond was created by Chemical Vapor Deposition (CVD) growth process. Type IIa