



ELECTRONIC COPY

LG756512682
Report verification at igi.org



December 18, 2025
IGI Report Number **LG756512682**
Description **LABORATORY GROWN DIAMOND**
Shape and Cutting Style **SQUARE CUSHION MODIFIED BRILLIANT**
Measurements **8.24 X 8.02 X 5.53 MM**
GRADING RESULTS
Carat Weight **3.34 CARATS**
Color Grade **FANCY VIVID ORANGY PINK**
Clarity Grade **VS 1**

December 18, 2025
IGI Report Number **LG756512682**
Description **LABORATORY GROWN DIAMOND**
Shape and Cutting Style **SQUARE CUSHION MODIFIED BRILLIANT**
Measurements **8.24 X 8.02 X 5.53 MM**

GRADING RESULTS

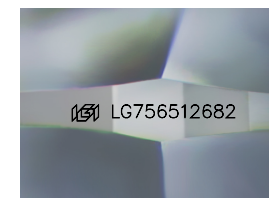
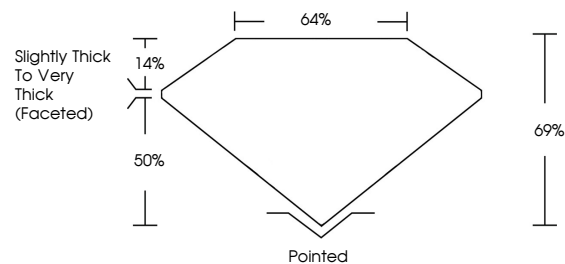
Carat Weight **3.34 CARATS**
Color Grade **FANCY VIVID ORANGY PINK**
Clarity Grade **VS 1**

ADDITIONAL GRADING INFORMATION

Polish **EXCELLENT**
Symmetry **EXCELLENT**
Fluorescence **SLIGHT**
Inscription(s) **IGI LG756512682**

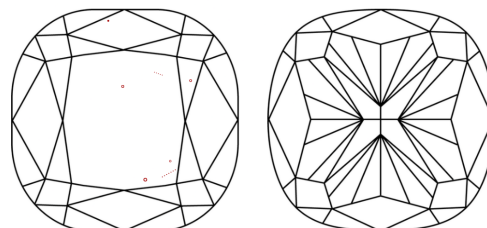
Comments: This Laboratory Grown Diamond was created by Chemical Vapor Deposition (CVD) growth process. Indications of post-growth treatment.

PROPORTIONS



Sample Image Used

CLARITY CHARACTERISTICS



KEY TO SYMBOLS

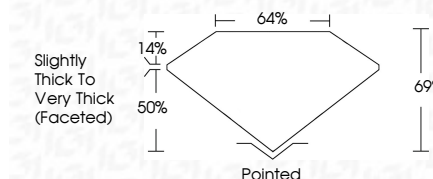
Red symbols indicate internal characteristics.
Green symbols indicate external characteristics.

COLOR

D E F G H I J Faint Very Light Light

CLARITY

FL	IF	VS ¹⁻²	VS ¹⁻²	SI ¹⁻²	I ¹⁻³
Flawless	Internally Flawless	Very Very Slightly Included	Very Slightly Included	Slightly Included	Included



ADDITIONAL GRADING INFORMATION

Polish **EXCELLENT**
Symmetry **EXCELLENT**
Fluorescence **SLIGHT**
Inscription(s) **IGI LG756512682**
Comments: This Laboratory Grown Diamond was created by Chemical Vapor Deposition (CVD) growth process. Indications of post-growth treatment.



December 18, 2025
IGI Report No LG756512682
SQUARE CUSHION MODIFIED BRILLIANT
8.24 X 8.02 X 5.53 MM
3.34 CARATS
FANCY VIVID ORANGY PINK
VS 1
69%
64%
Slightly Thick To Very Thick (Faceted)
Pointed
EXCELLENT
EXCELLENT
SLIGHT
IGI LG756512682
Comments: This Laboratory Grown Diamond was created by Chemical Vapor Deposition (CVD) growth process. Indications of post-growth treatment.