



ELECTRONIC COPY

LG756511649 Report verification at igi.org



December 19, 2025 IGI Report Number LG756511649 Description LABORATORY GROWN DIAMOND Shape and Cutting Style ROUND BRILLIANT Measurements 8.14 - 8.18 X 5.02 MM GRADING RESULTS Carat Weight 2.05 CARATS Color Grade E Clarity Grade VVS 2 Cut Grade IDEAL

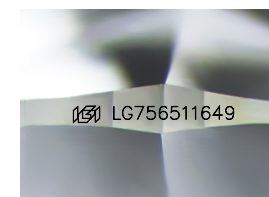
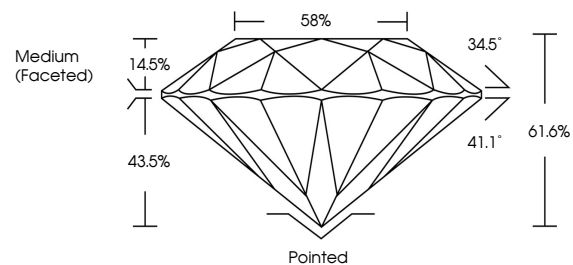
December 19, 2025 IGI Report Number LG756511649 Description LABORATORY GROWN DIAMOND Shape and Cutting Style ROUND BRILLIANT Measurements 8.14 - 8.18 X 5.02 MM GRADING RESULTS Carat Weight 2.05 CARATS Color Grade E Clarity Grade VVS 2 Cut Grade IDEAL

ADDITIONAL GRADING INFORMATION

Polish EXCELLENT Symmetry EXCELLENT Fluorescence NONE Inscription(s) IGI LG756511649

Comments: This Laboratory Grown Diamond was created by Chemical Vapor Deposition (CVD) growth process. Type IIa

PROPORTIONS



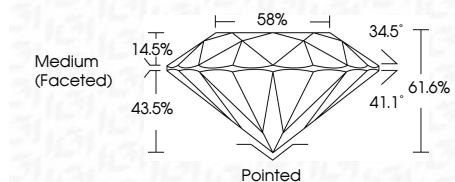
Sample Image Used

COLOR

D E F G H I J Faint Very Light Light

CLARITY

FL IF VVS 1-2 VS 1-2 SI 1-2 I 1-3 Flawless Internally Flawless Very Very Slightly Included Very Slightly Included Slightly Included Included



ADDITIONAL GRADING INFORMATION

Polish EXCELLENT Symmetry EXCELLENT Fluorescence NONE Inscription(s) IGI LG756511649 Comments: This Laboratory Grown Diamond was created by Chemical Vapor Deposition (CVD) growth process. Type IIa



December 19, 2025 IGI Report No LG756511649 ROUND BRILLIANT 8.14 - 8.18 X 5.02 MM 2.05 CARATS E VVS 2 IDEAL 61.6% 58% Medium (Faceted) Pointed EXCELLENT EXCELLENT NONE NONE IGI LG756511649 Comments: This Laboratory Grown Diamond was created by Chemical Vapor Deposition (CVD) growth process. Type IIa