



ELECTRONIC COPY

LG756509967
Report verification at igi.org



December 15, 2025
IGI Report Number **LG756509967**
Description **LABORATORY GROWN DIAMOND**
Shape and Cutting Style **CUT CORNERED
RECTANGULAR MODIFIED
BRILLIANT**
Measurements **7.99 X 5.79 X 3.82 MM**
GRADING RESULTS
Carat Weight **1.58 CARAT**
Color Grade **D**
Clarity Grade **VVS 1**

December 15, 2025
IGI Report Number **LG756509967**
Description **LABORATORY GROWN DIAMOND**
Shape and Cutting Style **CUT CORNERED RECTANGULAR
MODIFIED BRILLIANT**
Measurements **7.99 X 5.79 X 3.82 MM**

GRADING RESULTS

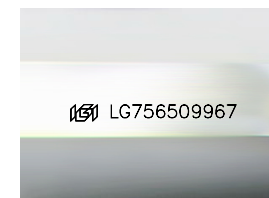
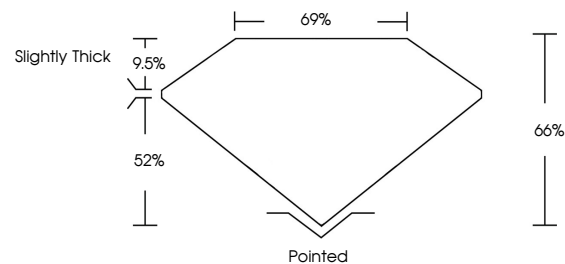
Carat Weight **1.58 CARAT**
Color Grade **D**
Clarity Grade **VVS 1**

ADDITIONAL GRADING INFORMATION

Polish **EXCELLENT**
Symmetry **EXCELLENT**
Fluorescence **NONE**
Inscription(s) **IGI LG756509967**

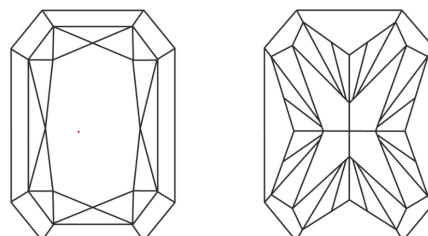
Comments: This Laboratory Grown Diamond was created by Chemical Vapor Deposition (CVD) growth process. Type IIa

PROPORTIONS



Sample Image Used

CLARITY CHARACTERISTICS



KEY TO SYMBOLS

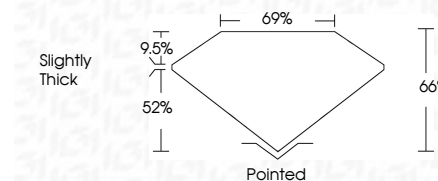
Red symbols indicate internal characteristics.
Green symbols indicate external characteristics.

COLOR

D E F G H I J Faint Very Light Light

CLARITY

FL	IF	VVS ¹⁻²	VS ¹⁻²	SI ¹⁻²	I ¹⁻³
Flawless	Internally Flawless	Very Very Slightly Included	Very Slightly Included	Slightly Included	Included



ADDITIONAL GRADING INFORMATION

Polish **EXCELLENT**
Symmetry **EXCELLENT**
Fluorescence **NONE**
Inscription(s) **IGI LG756509967**
Comments: This Laboratory Grown Diamond was created by Chemical Vapor Deposition (CVD) growth process. Type IIa



IGI



December 15, 2025
IGI Report No. LG756509967
CUT CORNERED RECT. MODIFIED BRILLIANT
1.58 CARAT
D
7.99 X 5.79 X 3.82 MM
VVS 1
D
66%
69%
Slightly Thick
Pointed
EXCELLENT
EXCELLENT
NONE
IGI LG756509967

Comments: This Laboratory Grown Diamond was created by Chemical Vapor Deposition (CVD) growth process. Type IIa