



**ELECTRONIC COPY**

LG756509887  
Report verification at igi.org



December 15, 2025

IGI Report Number **LG756509887**

Description **LABORATORY GROWN DIAMOND**

Shape and Cutting Style **EMERALD CUT**

Measurements **8.22 X 5.97 X 3.89 MM**

**GRADING RESULTS**

Carat Weight **2.01 CARATS**

Color Grade **FANCY VIVID BLUE**

Clarity Grade **VS 2**

December 15, 2025  
IGI Report Number **LG756509887**  
Description **LABORATORY GROWN DIAMOND**  
Shape and Cutting Style **EMERALD CUT**  
Measurements **8.22 X 5.97 X 3.89 MM**

**GRADING RESULTS**

Carat Weight **2.01 CARATS**

Color Grade **FANCY VIVID BLUE**

Clarity Grade **VS 2**

**ADDITIONAL GRADING INFORMATION**

Polish **EXCELLENT**

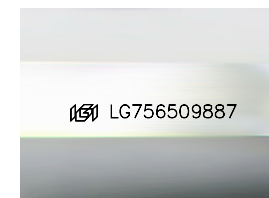
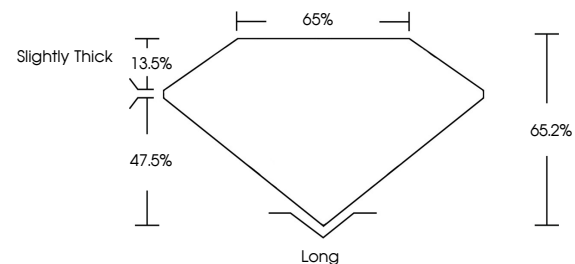
Symmetry **EXCELLENT**

Fluorescence **NONE**

Inscription(s) **LG756509887**

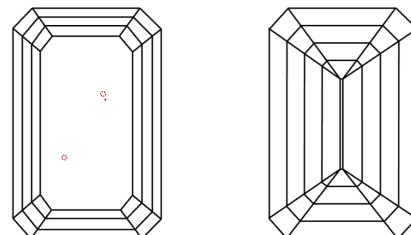
Comments: This Laboratory Grown Diamond was created by Chemical Vapor Deposition (CVD) growth process.  
Indications of post-growth treatment.

**PROPORTIONS**



Sample Image Used

**CLARITY CHARACTERISTICS**



**KEY TO SYMBOLS**

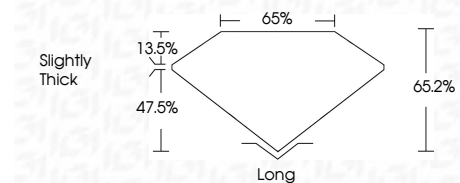
Red symbols indicate internal characteristics.  
Green symbols indicate external characteristics.

**COLOR**

D E F G H I J Faint Very Light Light

**CLARITY**

FL	IF	VS <sup>1-2</sup>	VS <sup>1-2</sup>	SI <sup>1-2</sup>	I <sup>1-3</sup>
Flawless	Internally Flawless	Very Very Slightly Included	Very Slightly Included	Slightly Included	Included



**ADDITIONAL GRADING INFORMATION**

Polish **EXCELLENT**

Symmetry **EXCELLENT**

Fluorescence **NONE**

Inscription(s) **LG756509887**

Comments: This Laboratory Grown Diamond was created by Chemical Vapor Deposition (CVD) growth process.  
Indications of post-growth treatment.



**IGI**



December 15, 2025	2.01 CARATS
IGI Report No LG756509887	FANCY VIVID BLUE
EMERALD CUT	VS 2
8.22 X 5.97 X 3.89 MM	65.2%
Carat Weight	65%
Color Grade	Slightly Thick
Clarity Grade	Long
Depth	EXCELLENT
Table	EXCELLENT
Girdle	NONE
Culet	None
Polish	EXCELLENT
Symmetry	EXCELLENT
Fluorescence	NONE
Inscription(s)	IGI LG756509887

Comments: This Laboratory Grown Diamond was created by Chemical Vapor Deposition (CVD) growth process.  
Indications of post-growth treatment.