



**ELECTRONIC COPY**

LG756508583  
Report verification at [igi.org](http://igi.org)



December 15, 2025  
IGI Report Number **LG756508583**  
Description **LABORATORY GROWN DIAMOND**  
Shape and Cutting Style **CUSHION MODIFIED BRILLIANT**  
Measurements **12.09 X 10.11 X 6.63 MM**  
**GRADING RESULTS**  
Carat Weight **7.09 CARATS**  
Color Grade **FANCY VIVID YELLOW**  
Clarity Grade **VS 2**

December 15, 2025  
IGI Report Number **LG756508583**  
Description **LABORATORY GROWN DIAMOND**  
Shape and Cutting Style **CUSHION MODIFIED BRILLIANT**  
Measurements **12.09 X 10.11 X 6.63 MM**

**GRADING RESULTS**

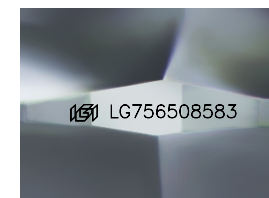
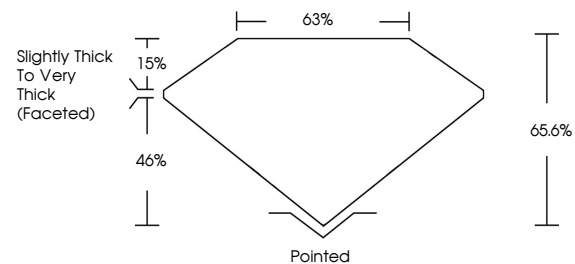
Carat Weight **7.09 CARATS**  
Color Grade **FANCY VIVID YELLOW**  
Clarity Grade **VS 2**

**ADDITIONAL GRADING INFORMATION**

Polish **EXCELLENT**  
Symmetry **VERY GOOD**  
Fluorescence **NONE**  
Inscription(s) **LG756508583**

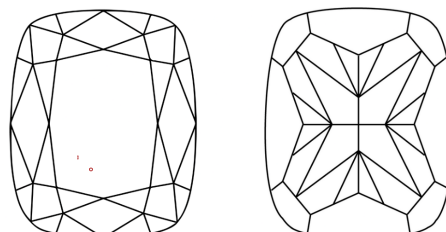
Comments: This Laboratory Grown Diamond was created by Chemical Vapor Deposition (CVD) growth process.

**PROPORTIONS**



Sample Image Used

**CLARITY CHARACTERISTICS**



**KEY TO SYMBOLS**

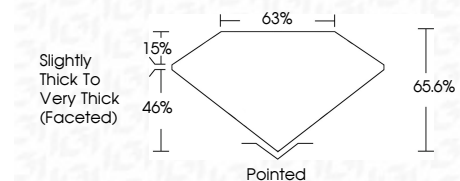
Red symbols indicate internal characteristics.  
Green symbols indicate external characteristics.

**COLOR**

D E F G H I J Faint Very Light Light

**CLARITY**

FL	IF	VS <sup>1-2</sup>	VS <sup>1-2</sup>	SI <sup>1-2</sup>	I <sup>1-3</sup>
Flawless	Internally Flawless	Very Very Slightly Included	Very Slightly Included	Slightly Included	Included



**ADDITIONAL GRADING INFORMATION**

Polish **EXCELLENT**  
Symmetry **VERY GOOD**  
Fluorescence **NONE**  
Inscription(s) **LG756508583**  
Comments: This Laboratory Grown Diamond was created by Chemical Vapor Deposition (CVD) growth process.



December 15, 2025  
IGI Report No **LG756508583**  
**CUSHION MODIFIED BRILLIANT**  
**7.09 CARATS**  
Carat Weight **FANCY VIVID YELLOW**  
Color Grade **VS 2**  
Depth **65.6%**  
Table **63%**  
Girdle **Slightly Thick To Very Thick (Faceted)**  
Culet **Pointed**  
Polish **EXCELLENT**  
Symmetry **VERY GOOD**  
Fluorescence **NONE**  
Inscription(s) **LG756508583**  
Comments: This Laboratory Grown Diamond was created by Chemical Vapor Deposition (CVD) growth process.