



ELECTRONIC COPY

LG756503077
Report verification at igi.org



December 15, 2025
IGI Report Number **LG756503077**
Description **LABORATORY GROWN DIAMOND**
Shape and Cutting Style **SQUARE CUSHION MODIFIED BRILLIANT**
Measurements **7.20 X 6.85 X 4.66 MM**
GRADING RESULTS
Carat Weight **2.08 CARATS**
Color Grade **FANCY VIVID BLUISH GREEN**
Clarity Grade **VS 1**

December 15, 2025
IGI Report Number **LG756503077**
Description **LABORATORY GROWN DIAMOND**
Shape and Cutting Style **SQUARE CUSHION MODIFIED BRILLIANT**
Measurements **7.20 X 6.85 X 4.66 MM**

GRADING RESULTS

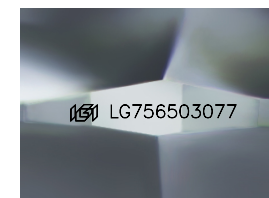
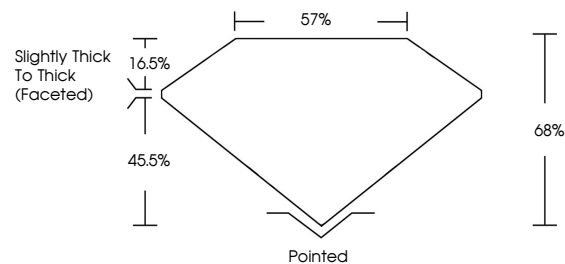
Carat Weight **2.08 CARATS**
Color Grade **FANCY VIVID BLUISH GREEN**
Clarity Grade **VS 1**

ADDITIONAL GRADING INFORMATION

Polish **EXCELLENT**
Symmetry **EXCELLENT**
Fluorescence **NONE**
Inscription(s) **IGI LG756503077**

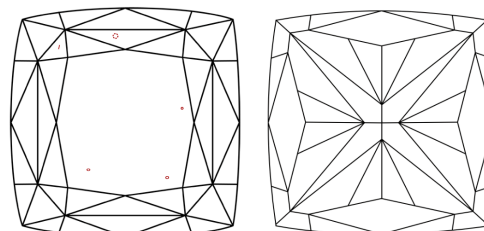
Comments: This Laboratory Grown Diamond was created by Chemical Vapor Deposition (CVD) growth process. Indications of post-growth treatment.

PROPORTIONS



Sample Image Used

CLARITY CHARACTERISTICS



KEY TO SYMBOLS

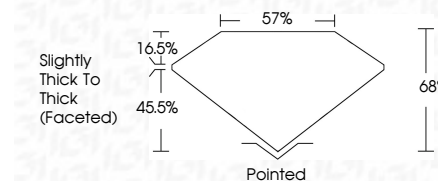
Red symbols indicate internal characteristics.
Green symbols indicate external characteristics.

COLOR

D E F G H I J Faint Very Light Light

CLARITY

FL	IF	VS ¹⁻²	VS ¹⁻²	SI ¹⁻²	I ¹⁻³
Flawless	Internally Flawless	Very Very Slightly Included	Very Slightly Included	Slightly Included	Included



ADDITIONAL GRADING INFORMATION

Polish **EXCELLENT**
Symmetry **EXCELLENT**
Fluorescence **NONE**
Inscription(s) **IGI LG756503077**
Comments: This Laboratory Grown Diamond was created by Chemical Vapor Deposition (CVD) growth process. Indications of post-growth treatment.



December 15, 2025
IGI Report No LG756503077
SQUARE CUSHION MODIFIED BRILLIANT
7.20 X 6.85 X 4.66 MM
2.08 CARATS
Carat Weight
Color Grade **FANCY VIVID BLUISH GREEN**
Clarity Grade **VS 1**
Depth **68%**
Table **57%**
Girdle **Slightly Thick To Thick (Faceted)**
Culet **Pointed**
Polish **EXCELLENT**
Symmetry **EXCELLENT**
Fluorescence **NONE**
Inscription(s) **IGI LG756503077**
Comments: This Laboratory Grown Diamond was created by Chemical Vapor Deposition (CVD) growth process. Indications of post-growth treatment.