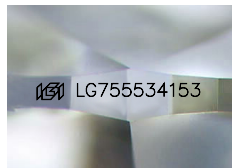




December 11, 2025
IGI Report Number LG755534153
OVAL BRILLIANT
LABORATORY GROWN DIAMOND
7.54 X 5.62 X 3.54 MM
 Carat Weight **0.97 CARAT**
 Color Grade **F**
 Clarity Grade **VVS 1**
 Polish **EXCELLENT**
 Symmetry **EXCELLENT**
 Fluorescence **NONE**
 Inscription(s) **IGI LG755534153**

LABORATORY GROWN DIAMOND REPORT

December 11, 2025
 IGI Report Number **LG755534153**
 Description **LABORATORY GROWN DIAMOND**
 Shape and Cutting Style **OVAL BRILLIANT**
 Measurements **7.54 X 5.62 X 3.54 MM**



Sample Image Used

Comments: This Laboratory Grown Diamond was created by Chemical Vapor Deposition (CVD) growth process. Type IIa

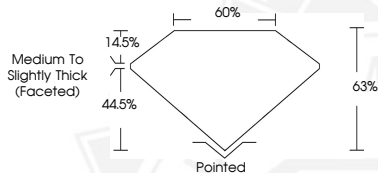
GRADING RESULTS

Carat Weight **0.97 CARAT**
 Color Grade **F**
 Clarity Grade **VVS 1**

ADDITIONAL GRADING INFORMATION

Polish **EXCELLENT**
 Symmetry **EXCELLENT**
 Fluorescence **NONE**
 Inscription(s) **IGI LG755534153**

Comments: This Laboratory Grown Diamond was created by Chemical Vapor Deposition (CVD) growth process. Type IIa



December 11, 2025
IGI Report Number LG755534153
OVAL BRILLIANT
LABORATORY GROWN DIAMOND
7.54 X 5.62 X 3.54 MM
 Carat Weight **0.97 CARAT**
 Color Grade **F**
 Clarity Grade **VVS 1**
 Polish **EXCELLENT**
 Symmetry **EXCELLENT**
 Fluorescence **NONE**
 Inscription(s) **IGI LG755534153**

Comments: This Laboratory Grown Diamond was created by Chemical Vapor Deposition (CVD) growth process. Type IIa



THIS DOCUMENT WAS PRODUCED WITH THE FOLLOWING SECURITY MEASURES: SPECIAL DOCUMENT PAPER, INK SCREENS, WATERMARK, BACKGROUND DESIGNS, HOLOGRAM AND OTHER SECURITY FEATURES NOT LISTED AND DO EXCEED DOCUMENT SECURITY INDUSTRY GUIDELINES.