



**ELECTRONIC COPY**

## LABORATORY GROWN DIAMOND REPORT

December 10, 2025	
IGI Report Number	LG755533813
Description	LABORATORY GROWN DIAMOND
Shape and Cutting Style	ROUND BRILLIANT
Measurements	8.69 - 8.73 X 5.39 MM

## GRADING RESULTS

Carat Weight	2.56 CARATS
Color Grade	E
Clarity Grade	VVS 2
Cut Grade	IDEAL

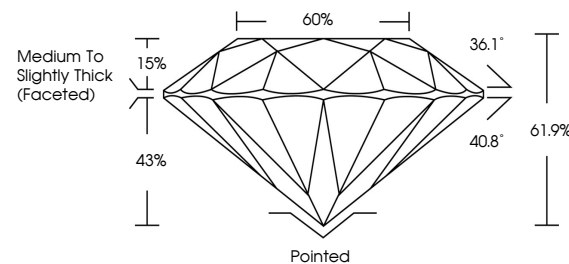
### ADDITIONAL GRADING INFORMATION

Polish	EXCELLENT
Symmetry	EXCELLENT
Fluorescence	NONE
Inscription(s)	 LG755533813

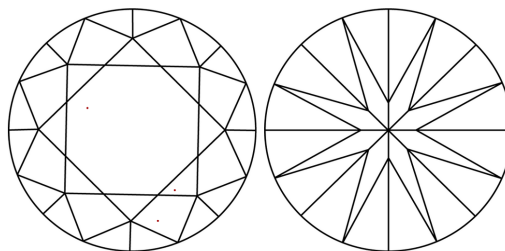
Comments: This Laboratory Grown Diamond was created by Chemical Vapor Deposition (CVD) growth process.  
Type IIa

LG755533813  
Report verification at [igi.org](https://igi.org)

## PROPORTIONS

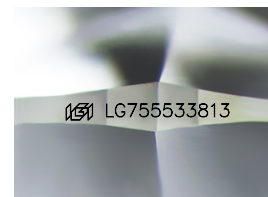


## CLARITY CHARACTERISTICS



## KEY TO SYMBOLS

Red symbols indicate internal characteristics.  
Green symbols indicate external characteristics.



Sample Image Used

**COLOR**

D E F G H I J Faint Very Light Light

## CLARITY

FL	IF	VVS <sup>1-2</sup>	VS <sup>1-2</sup>	SI <sup>1-2</sup>	I <sup>1-3</sup>
Flawless	Internally Flawless	Very Very Slightly Included	Very Slightly Included	Slightly Included	Included

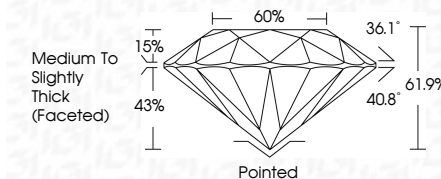
## LABORATORY GROWN DIAMOND REPORT



December 10, 2025	
IGI Report Number	LG755533813
Description	LABORATORY GROWN DIAMOND
Shape and Cutting Style	ROUND BRILLIANT
Measurements	8.69 - 8.73 X 5.39 MM

## GRADING RESULTS

Carat Weight	2.56 CARATS
Color Grade	E
Clarity Grade	VVS 2
Cut Grade	IDEAL



### ADDITIONAL GRADING INFORMATION

Polish	EXCELLENT
Symmetry	EXCELLENT
Fluorescence	NONE
Inscription(s)	 LG755533813
Comments: This Laboratory Grown Diamond was created by Chemical Vapor Deposition (CVD) growth process.	
Type IIa	



© IGI 2020, International Gemological Institute

FD - 10 20



THIS DOCUMENT WAS PRODUCED WITH THE FOLLOWING SECURITY MEASURES: SPECIAL DOCUMENT PAPER, INK SCREENS, WATERMARK, BACKGROUND DESIGNS, HOLOGRAM AND OTHER SECURITY FEATURES NOT LISTED AND DO EXCEED DOCUMENT SECURITY INDUSTRY GUIDELINE

**www.igi.org**

December 10, 2025  
IGI Report No LG755533813  
ROUND BRILLIANT

6.69 - 8.73 X 5.39 MM		2.56 CARATS	
Carat Weight	E	VVS 2	Pointed
Color Grade		IDEAL	EXCELLENT
Clarity Grade		61.9%	EXCELLENT
Cut Grade		60%	NONE
Depth		Medium to Slightly Thick (Faceted)	
Table			
Girdle			
Culet			
Polish			
Symmetry			
Fluorescence			

**Comments:**  
This Laboratory Grown Diamond was created by Chemical Vapor Deposition (CVD) growth process.