



**INTERNATIONAL
GEMOLOGICAL
INSTITUTE**

ELECTRONIC COPY

LG755532102
Report verification at igi.org

LABORATORY GROWN DIAMOND REPORT



December 9, 2025

IGI Report Number **LG755532102**

Description	LABORATORY GROWN DIAMOND
-------------	--------------------------

Shape and Cutting Style **ROUND BRILLIANT**

Measurements	7.50 - 7.53 X 4.58 MM
--------------	-----------------------

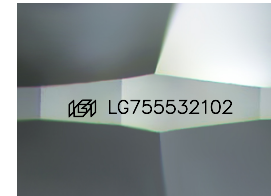
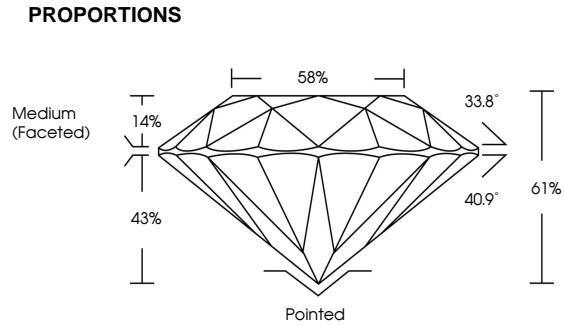
GRADING RESULTS

Carat Weight 1.59 CARAT

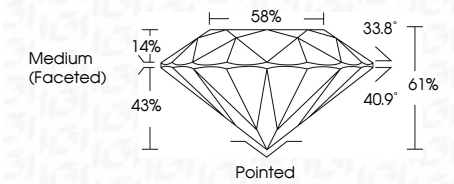
Color Grade	D
-------------	---

Clarity Grade **VS 1**

Cut Grade **IDEAL**



Sample Image Used



COLOR

D E F G H I J Faint Very Light Light

CLARITY

FL IF WS¹⁻² VS¹⁻² SI¹⁻² I¹⁻³

Flawless	Internally Flawless	Very Very Slightly Included	Very Slightly Included	Slightly Included	Included
----------	---------------------	-----------------------------	------------------------	-------------------	----------



© IGI 2020, International Gemological Institute

FD - 10 20

www.igi.org



THIS DOCUMENT WAS PRODUCED WITH THE FOLLOWING SECURITY MEASURES: SPECIAL DOCUMENT PAPER, INK SCREENS, WATERMARK BACKGROUND DESIGNS, HOLOGRAM AND OTHER SECURITY FEATURES NOT LISTED AND DO EXCEED DOCUMENT SECURITY INDUSTRY GUIDELINES.



IGI

December 9, 2025
IGI Report No LG7555
ROUND BRILLIANT

7.50 - 7.53 X 4.58 MM
Carat Weight 1.59 CARAT

1.59 CARAT	1.59 CARAT
Color Grade	D

	VS 1	IDEAL
Clarity Grade		
Cut Grade		

Depth	61%
Table	58%

Girdle	Medium (Fasted)
Control	1.0
100 mg/kg	1.0
200 mg/kg	1.0
400 mg/kg	1.0
800 mg/kg	1.0
1600 mg/kg	1.0
3200 mg/kg	1.0
6400 mg/kg	1.0
12800 mg/kg	1.0
25600 mg/kg	1.0
51200 mg/kg	1.0
102400 mg/kg	1.0
204800 mg/kg	1.0
409600 mg/kg	1.0
819200 mg/kg	1.0
1638400 mg/kg	1.0
3276800 mg/kg	1.0
6553600 mg/kg	1.0
13107200 mg/kg	1.0
26214400 mg/kg	1.0
52428800 mg/kg	1.0
104857600 mg/kg	1.0
209715200 mg/kg	1.0
419430400 mg/kg	1.0
838860800 mg/kg	1.0
1677721600 mg/kg	1.0
3355443200 mg/kg	1.0
6710886400 mg/kg	1.0
13421772800 mg/kg	1.0
26843545600 mg/kg	1.0
53687091200 mg/kg	1.0
107374182400 mg/kg	1.0
214748364800 mg/kg	1.0
429496729600 mg/kg	1.0
858993459200 mg/kg	1.0
1717986918400 mg/kg	1.0
3435973836800 mg/kg	1.0
6871947673600 mg/kg	1.0
13743895347200 mg/kg	1.0
27487790694400 mg/kg	1.0
54975581388800 mg/kg	1.0
109951162777600 mg/kg	1.0
219902325555200 mg/kg	1.0
439804651110400 mg/kg	1.0
879609302220800 mg/kg	1.0
1759218604441600 mg/kg	1.0
3518437208883200 mg/kg	1.0
7036874417766400 mg/kg	1.0
14073748835532800 mg/kg	1.0
28147497671065600 mg/kg	1.0
56294995342131200 mg/kg	1.0
112589990684262400 mg/kg	1.0
225179981368524800 mg/kg	1.0
450359962737049600 mg/kg	1.0
900719925474099200 mg/kg	1.0
1801439850948198400 mg/kg	1.0
3602879701896396800 mg/kg	1.0
7205759403792793600 mg/kg	1.0
14411518807585587200 mg/kg	1.0
28823037615171174400 mg/kg	1.0
57646075230342348800 mg/kg	1.0
115292150460684697600 mg/kg	1.0
230584300921369395200 mg/kg	1.0
461168601842738790400 mg/kg	1.0
922337203685477580800 mg/kg	1.0
1844674407370955161600 mg/kg	1.0
3689348814741910323200 mg/kg	1.0
7378697629483820646400 mg/kg	1.0
14757395258967641292800 mg/kg	1.0
29514790517935282585600 mg/kg	1.0
59029581035870565171200 mg/kg	1.0
118059162071741130342400 mg/kg	1.0
236118324143482260684800 mg/kg	1.0
472236648286964521369600 mg/kg	1.0
944473296573929042739200 mg/kg	1.0
1888946593147858085478400 mg/kg	1.0
3777893186295716170956800 mg/kg	1.0
7555786372591432341913600 mg/kg	1.0
15111572745182864683827200 mg/kg	1.0
30223145490365729367654400 mg/kg	1.0
60446290980731458735308800 mg/kg	1.0
120892581961462917470617600 mg/kg	1.0
241785163922925834941235200 mg/kg	1.0
483570327845851669882470400 mg/kg	1.0
967140655691703339764940800 mg/kg	1.0
1934281311383406679529881600 mg/kg	1.0
3868562622766813359059763200 mg/kg	1.0
7737125245533626718119526400 mg/kg	1.0
15474250491067253436239052800 mg/kg	1.0
30948500982134506872478105600 mg/kg	1.0
61897001964269013744956211200 mg/kg	1.0
123794003928538027489912422400 mg/kg	1.0
247588007857076054979824844800 mg/kg	1.0
495176015714152109959649689600 mg/kg	1.0
990352031428304219919299379200 mg/kg	1.0
1980704062856608439838598758400 mg/kg	1.0
3961408125713216879677197516800 mg/kg	1.0
7922816251426433759354395033600 mg/kg	1.0
15845632502852867518708790067200 mg/kg	1.0

Culet	Pointed
Polish	EXCELLENT
Symmetry	EXCELLENT

Symmetry					EXCELLENT
Fluorescence					NONE
Inscription(s)					1971 LG755532102

Comments:
This Laboratory Grown Diamond was

Comments:
This Laboratory Grown Diamond was
created by Chemical Vapor Deposition
(CVD) growth process

Type IIa
(CVD) growth process.