

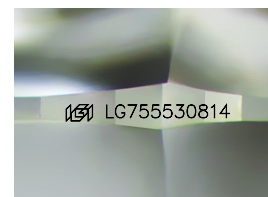
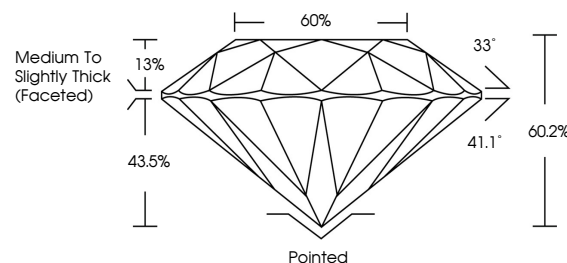


ELECTRONIC COPY

LABORATORY GROWN DIAMOND REPORT

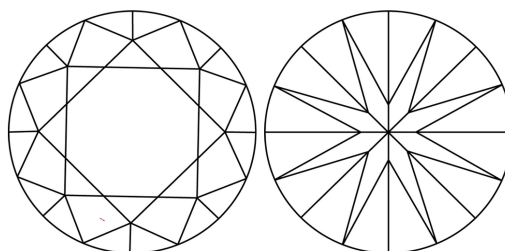
LG755530814
Report verification at igi.org

PROPORTIONS



Sample Image Used

CLARITY CHARACTERISTICS



KEY TO SYMBOLS

Red symbols indicate internal characteristics.
Green symbols indicate external characteristics.

COLOR

D E F G H I J Faint Very Light Light

CLARITY

FL	IF	VVS ¹⁻²	VS ¹⁻²	SI ¹⁻²	I ¹⁻³
Flawless	Internally Flawless	Very Very Slightly Included	Very Slightly Included	Slightly Included	Included

LABORATORY GROWN DIAMOND REPORT



December 10, 2025

IGI Report Number **LG755530814**Description **LABORATORY GROWN DIAMOND**Shape and Cutting Style **ROUND BRILLIANT**

Measurements	8.76 - 8.83 X 5.30 MM
--------------	-----------------------

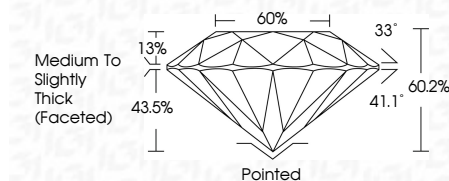
GRADING RESULTS

Carat Weight **2.51 CARATS**

Color Grade E

Clarity Grade VVS 2

Cut Grade **IDEAL**



ADDITIONAL GRADING INFORMATION

Polish EXCELLENT

Symmetry **EXCELLENT**Fluorescence NONIInscription(s) LG755530814

Comments: This Laboratory Grown Diamond was created by Chemical Vapor Deposition (CVD) growth process.
Type IIa



© IGI 2020, International Gemological Institute

FD - 10 20



THIS DOCUMENT WAS PRODUCED WITH THE FOLLOWING SECURITY MEASURES: SPECIAL DOCUMENT PAPER, INK SCREENS, WATERMARK, BACKGROUND DESIGNS, HOLOGRAM AND OTHER SECURITY FEATURES NOT LISTED AND DO EXCEED DOCUMENT SECURITY INDUSTRY GUIDELINES

www.igi.org

December 10, 2025
LGI Report No LG755530814
ROUND BRILLIANT

7.76 - 8.83 X 5.30 MM	Carat Weight	2.51 CARATS
Color Grade	Color	E
Clarity Grade	Clarity	VVS 2
Cut Grade	Cut	IDPAL
Depth	Table	60.2%
Girdle	Girdle	60%
Culet	Culet	Medium To Slightly Thick (Faceted)
Polish	Polish	Pointed
Symmetry	Symmetry	EXCELLENT
Fluorescence	Fluorescence	NONE

Comments:
This Laboratory Grown Diamond was
created by Chemical Vapor Deposition
(CVD) growth process.