



**ELECTRONIC COPY**

LG755530001  
Report verification at igi.org



January 2, 2026  
IGI Report Number **LG755530001**  
Description **LABORATORY GROWN DIAMOND**  
Shape and Cutting Style **SQUARE CUSHION MODIFIED BRILLIANT**  
Measurements **15.46 X 10.87 X 6.93 MM**  
**GRADING RESULTS**  
Carat Weight **10.02 CARATS**  
Color Grade **FANCY LIGHT YELLOW**  
Clarity Grade **SI 2**

**LABORATORY GROWN DIAMOND REPORT**

January 2, 2026  
IGI Report Number **LG755530001**  
Description **LABORATORY GROWN DIAMOND**  
Shape and Cutting Style **SQUARE CUSHION MODIFIED BRILLIANT**  
Measurements **15.46 X 10.87 X 6.93 MM**

**GRADING RESULTS**

Carat Weight **10.02 CARATS**  
Color Grade **FANCY LIGHT YELLOW**  
Clarity Grade **SI 2**

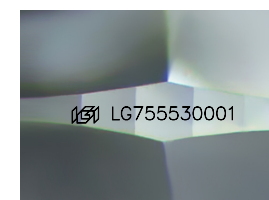
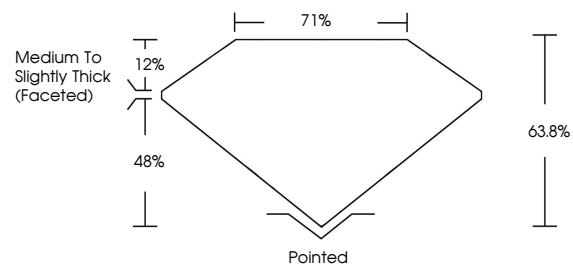
**ADDITIONAL GRADING INFORMATION**

Polish **EXCELLENT**  
Symmetry **EXCELLENT**  
Fluorescence **NONE**  
Inscription(s) **IGI LG755530001**

Comments: This Laboratory Grown Diamond was created by Chemical Vapor Deposition (CVD) growth process.

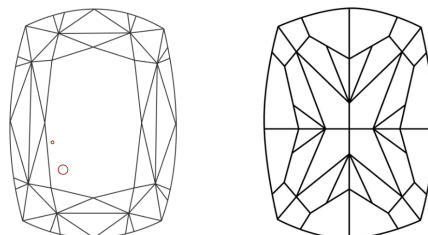
Secondary color: Brown

**PROPORTIONS**



Sample Image Used

**CLARITY CHARACTERISTICS**



**KEY TO SYMBOLS**

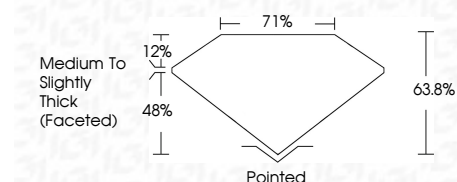
Red symbols indicate internal characteristics.  
Green symbols indicate external characteristics.

**COLOR**

D E F G H I J Faint Very Light Light

**CLARITY**

FL	IF	VS <sup>1-2</sup>	VS <sup>1-2</sup>	SI <sup>1-2</sup>	I <sup>1-3</sup>
Flawless	Internally Flawless	Very Very Slightly Included	Very Slightly Included	Slightly Included	Included



**ADDITIONAL GRADING INFORMATION**

Polish **EXCELLENT**  
Symmetry **EXCELLENT**  
Fluorescence **NONE**  
Inscription(s) **IGI LG755530001**  
Comments: This Laboratory Grown Diamond was created by Chemical Vapor Deposition (CVD) growth process.  
Secondary color: Brown



January 2, 2026  
IGI Report No LG755530001  
**SQUARE CUSHION MODIFIED BRILLIANT**  
15.46 X 10.87 X 6.93 MM  
10.02 CARATS  
FANCY LIGHT YELLOW  
SI 2  
63.8%  
71%  
Medium to Slightly Thick (Faceted)  
Pointed  
EXCELLENT  
EXCELLENT  
NONE  
IGI LG755530001  
Comments: This Laboratory Grown Diamond was created by Chemical Vapor Deposition (CVD) growth process.  
Secondary color: Brown