



ELECTRONIC COPY

LG755526631
Report verification at igi.org



December 6, 2025

IGI Report Number **LG755526631**

Description **LABORATORY GROWN DIAMOND**

Shape and Cutting Style **ROUND BRILLIANT**

Measurements **8.01 - 8.07 X 4.95 MM**

GRADING RESULTS

Carat Weight **2.00 CARATS**

Color Grade **D**

Clarity Grade **VS 1**

Cut Grade **VERY GOOD**

December 6, 2025
IGI Report Number **LG755526631**
Description **LABORATORY GROWN DIAMOND**
Shape and Cutting Style **ROUND BRILLIANT**
Measurements **8.01 - 8.07 X 4.95 MM**

GRADING RESULTS

Carat Weight **2.00 CARATS**

Color Grade **D**

Clarity Grade **VS 1**

Cut Grade **VERY GOOD**

ADDITIONAL GRADING INFORMATION

Polish **EXCELLENT**

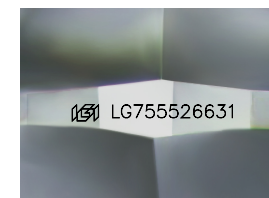
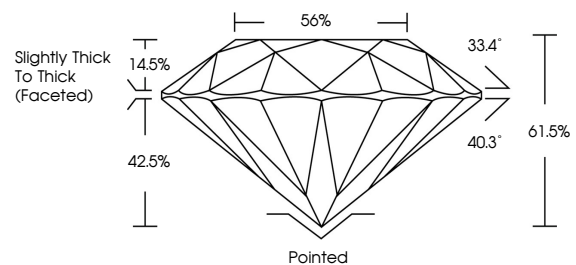
Symmetry **EXCELLENT**

Fluorescence **NONE**

Inscription(s) **IGI LG755526631**

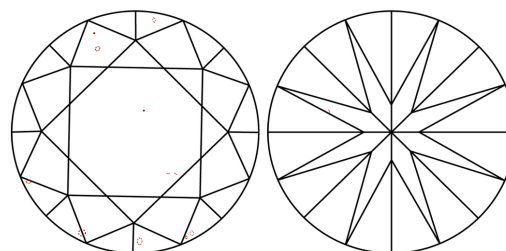
Comments: This Laboratory Grown Diamond was created by Chemical Vapor Deposition (CVD) growth process.
Type IIa

PROPORTIONS



Sample Image Used

CLARITY CHARACTERISTICS



KEY TO SYMBOLS

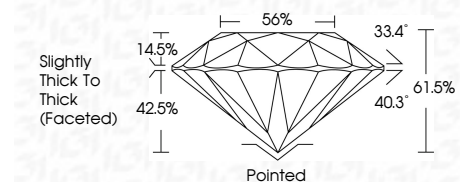
Red symbols indicate internal characteristics.
Green symbols indicate external characteristics.

COLOR

D E F G H I J Faint Very Light Light

CLARITY

FL	IF	VS ¹⁻²	VS ¹⁻²	SI ¹⁻²	I ¹⁻³
Flawless	Internally Flawless	Very Very Slightly Included	Very Slightly Included	Slightly Included	Included



ADDITIONAL GRADING INFORMATION

Polish **EXCELLENT**

Symmetry **EXCELLENT**

Fluorescence **NONE**

Inscription(s) **IGI LG755526631**

Comments: This Laboratory Grown Diamond was created by Chemical Vapor Deposition (CVD) growth process.
Type IIa



IGI



December 6, 2025
IGI Report No LG755526631
ROUND BRILLIANT
8.01 - 8.07 X 4.95 MM
2.00 CARATS
D
Color Grade
VERY GOOD
VS 1
Depth 61.5%
Table 14.5%
Girdle 56%
Slightly Thick To Thick (Faceted)
Pointed
Polish EXCELLENT
Symmetry EXCELLENT
Fluorescence NONE
Inscription(s) IGI LG755526631
Comments: This Laboratory Grown Diamond was created by Chemical Vapor Deposition (CVD) growth process.
Type IIa