



ELECTRONIC COPY

LABORATORY GROWN DIAMOND REPORT

LG755524725
Report verification at igi.org

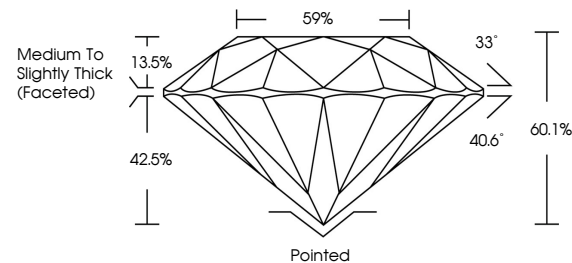
December 8, 2025	
IGI Report Number	LG755524725
Description	LABORATORY GROWN DIAMOND
Shape and Cutting Style	ROUND BRILLIANT
Measurements	9.42 - 9.47 X 5.67 MM
GRADING RESULTS	
Carat Weight	3.11 CARATS
Color Grade	E
Clarity Grade	VS 1
Cut Grade	IDEAL

ADDITIONAL GRADING INFORMATION

Polish	EXCELLENT
Symmetry	EXCELLENT
Fluorescence	NONE
Inscription(s)	 LG755524725

Comments: This Laboratory Grown Diamond was created by Chemical Vapor Deposition (CVD) growth process.
Type IIa

PROPORTIONS



Sample Image Used

COLOR

D E F G H I J Faint Very Light Light

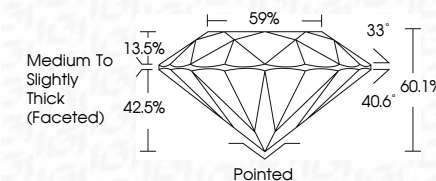
CLARITY

FL	IF	VVS ¹⁻²	VS ¹⁻²	SI ¹⁻²	I ¹⁻³
Flawless	Internally Flawless	Very Very Slightly Included	Very Slightly Included	Slightly Included	Included

LABORATORY GROWN DIAMOND REPORT



December 8, 2025	
IGI Report Number	LG755524725
Description	LABORATORY GROWN DIAMOND
Shape and Cutting Style	ROUND BRILLIANT
Measurements	9.42 - 9.47 X 5.67 MM
GRADING RESULTS	
Carat Weight	3.11 CARATS
Color Grade	E
Clarity Grade	VS 1
Cut Grade	IDEAL



ADDITIONAL GRADING INFORMATION

Polish	EXCELLENT
Symmetry	EXCELLENT
Fluorescence	NONE
Inscription(s)	LG LG755524725
<p>Comments: This Laboratory Grown Diamond was created by Chemical Vapor Deposition (CVD) growth process.</p> <p>Type IIa</p>	



© IGI 2020, International Gemological Institute

FD - 10 20



THIS DOCUMENT WAS PRODUCED WITH THE FOLLOWING SECURITY MEASURES: SPECIAL DOCUMENT PAPER, INK SCREENS, WATERMARK, BACKGROUND DESIGNS, HOLOGRAM, AND OTHER SECURITY FEATURES NOT LISTED AND DO EXCEED DOCUMENT SECURITY INDUSTRY GUIDELINES

www.igi.org

December 8, 2025

December 8, 2025
CI Report No. 1C75552473E

GI Report No LG755524725
ROUND BRILLIANT

9.42 - 9.47 X 5.67 MM

Color Grade	Color Weight	3.11 Carats	E
-------------	--------------	-------------	---

Clarity Grade	VS 1
---------------	------

Depth 60.1%

Table	59%
Girdle	Medium To Slightly

Cut	Price (\$ per carat)	Weight (carats)	Color	Clarity	Shape	Flaw	Setting	Ring Material	Band Material	Chain Material	Clasp	Total Price (\$)
F	1000	1.0	D	SI	Round	None	Pave	18K Yellow Gold	18K Yellow Gold	18K Yellow Gold	Locket	1000 + 1000 + 1000 = 3000
E	900	1.0	E	SI	Round	None	Pave	18K Yellow Gold	18K Yellow Gold	18K Yellow Gold	Locket	900 + 1000 + 1000 = 2900
D	800	1.0	D	SI	Round	None	Pave	18K Yellow Gold	18K Yellow Gold	18K Yellow Gold	Locket	800 + 1000 + 1000 = 2800
C	700	1.0	C	SI	Round	None	Pave	18K Yellow Gold	18K Yellow Gold	18K Yellow Gold	Locket	700 + 1000 + 1000 = 2700
B	600	1.0	B	SI	Round	None	Pave	18K Yellow Gold	18K Yellow Gold	18K Yellow Gold	Locket	600 + 1000 + 1000 = 2600
A	500	1.0	A	SI	Round	None	Pave	18K Yellow Gold	18K Yellow Gold	18K Yellow Gold	Locket	500 + 1000 + 1000 = 2500
G	400	1.0	G	SI	Round	None	Pave	18K Yellow Gold	18K Yellow Gold	18K Yellow Gold	Locket	400 + 1000 + 1000 = 2400
H	300	1.0	H	SI	Round	None	Pave	18K Yellow Gold	18K Yellow Gold	18K Yellow Gold	Locket	300 + 1000 + 1000 = 2300
I	200	1.0	I	SI	Round	None	Pave	18K Yellow Gold	18K Yellow Gold	18K Yellow Gold	Locket	200 + 1000 + 1000 = 2200
J	100	1.0	J	SI	Round	None	Pave	18K Yellow Gold	18K Yellow Gold	18K Yellow Gold	Locket	100 + 1000 + 1000 = 2100
K	50	1.0	K	SI	Round	None	Pave	18K Yellow Gold	18K Yellow Gold	18K Yellow Gold	Locket	50 + 1000 + 1000 = 2050
L	25	1.0	L	SI	Round	None	Pave	18K Yellow Gold	18K Yellow Gold	18K Yellow Gold	Locket	25 + 1000 + 1000 = 2025
M	10	1.0	M	SI	Round	None	Pave	18K Yellow Gold	18K Yellow Gold	18K Yellow Gold	Locket	10 + 1000 + 1000 = 2010
N	5	1.0	N	SI	Round	None	Pave	18K Yellow Gold	18K Yellow Gold	18K Yellow Gold	Locket	5 + 1000 + 1000 = 2005
O	2	1.0	O	SI	Round	None	Pave	18K Yellow Gold	18K Yellow Gold	18K Yellow Gold	Locket	2 + 1000 + 1000 = 2002
P	1	1.0	P	SI	Round	None	Pave	18K Yellow Gold	18K Yellow Gold	18K Yellow Gold	Locket	1 + 1000 + 1000 = 2001
Q	0.5	1.0	Q	SI	Round	None	Pave	18K Yellow Gold	18K Yellow Gold	18K Yellow Gold	Locket	0.5 + 1000 + 1000 = 2000.5
R	0.25	1.0	R	SI	Round	None	Pave	18K Yellow Gold	18K Yellow Gold	18K Yellow Gold	Locket	0.25 + 1000 + 1000 = 2000.25
S	0.1	1.0	S	SI	Round	None	Pave	18K Yellow Gold	18K Yellow Gold	18K Yellow Gold	Locket	0.1 + 1000 + 1000 = 2000.1
T	0.05	1.0	T	SI	Round	None	Pave	18K Yellow Gold	18K Yellow Gold	18K Yellow Gold	Locket	0.05 + 1000 + 1000 = 2000.05
U	0.02	1.0	U	SI	Round	None	Pave	18K Yellow Gold	18K Yellow Gold	18K Yellow Gold	Locket	0.02 + 1000 + 1000 = 2000.02
V	0.01	1.0	V	SI	Round	None	Pave	18K Yellow Gold	18K Yellow Gold	18K Yellow Gold	Locket	0.01 + 1000 + 1000 = 2000.01
W	0.005	1.0	W	SI	Round	None	Pave	18K Yellow Gold	18K Yellow Gold	18K Yellow Gold	Locket	0.005 + 1000 + 1000 = 2000.005
X	0.002	1.0	X	SI	Round	None	Pave	18K Yellow Gold	18K Yellow Gold	18K Yellow Gold	Locket	0.002 + 1000 + 1000 = 2000.002
Y	0.001	1.0	Y	SI	Round	None	Pave	18K Yellow Gold	18K Yellow Gold	18K Yellow Gold	Locket	0.001 + 1000 + 1000 = 2000.001
Z	0.0005	1.0	Z	SI	Round	None	Pave	18K Yellow Gold	18K Yellow Gold	18K Yellow Gold	Locket	0.0005 + 1000 + 1000 = 2000.0005
AA	0.0002	1.0	AA	SI	Round	None	Pave	18K Yellow Gold	18K Yellow Gold	18K Yellow Gold	Locket	0.0002 + 1000 + 1000 = 2000.0002
AB	0.0001	1.0	AB	SI	Round	None	Pave	18K Yellow Gold	18K Yellow Gold	18K Yellow Gold	Locket	0.0001 + 1000 + 1000 = 2000.0001
AC	0.00005	1.0	AC	SI	Round	None	Pave	18K Yellow Gold	18K Yellow Gold	18K Yellow Gold	Locket	0.00005 + 1000 + 1000 = 2000.00005
AD	0.00002	1.0	AD	SI								

Polish	EXCELLENT
1. <i>Wzrost</i>	1. <i>Height</i>
2. <i>Waga</i>	2. <i>Weight</i>
3. <i>Temperatura ciała</i>	3. <i>Body temperature</i>
4. <i>Ciepota</i>	4. <i>Warmth</i>
5. <i>Chłód</i>	5. <i>Cold</i>
6. <i>Prękość</i>	6. <i>Speed</i>
7. <i>Waga ciała</i>	7. <i>Body weight</i>
8. <i>Prękość</i>	8. <i>Speed</i>
9. <i>Prękość</i>	9. <i>Speed</i>
10. <i>Prękość</i>	10. <i>Speed</i>
11. <i>Prękość</i>	11. <i>Speed</i>
12. <i>Prękość</i>	12. <i>Speed</i>
13. <i>Prękość</i>	13. <i>Speed</i>
14. <i>Prękość</i>	14. <i>Speed</i>
15. <i>Prękość</i>	15. <i>Speed</i>
16. <i>Prękość</i>	16. <i>Speed</i>
17. <i>Prękość</i>	17. <i>Speed</i>
18. <i>Prękość</i>	18. <i>Speed</i>
19. <i>Prękość</i>	19. <i>Speed</i>
20. <i>Prękość</i>	20. <i>Speed</i>
21. <i>Prękość</i>	21. <i>Speed</i>
22. <i>Prękość</i>	22. <i>Speed</i>
23. <i>Prękość</i>	23. <i>Speed</i>
24. <i>Prękość</i>	24. <i>Speed</i>
25. <i>Prękość</i>	25. <i>Speed</i>
26. <i>Prękość</i>	26. <i>Speed</i>
27. <i>Prękość</i>	27. <i>Speed</i>
28. <i>Prękość</i>	28. <i>Speed</i>
29. <i>Prękość</i>	29. <i>Speed</i>
30. <i>Prękość</i>	30. <i>Speed</i>
31. <i>Prękość</i>	31. <i>Speed</i>
32. <i>Prękość</i>	32. <i>Speed</i>
33. <i>Prękość</i>	33. <i>Speed</i>
34. <i>Prękość</i>	34. <i>Speed</i>
35. <i>Prękość</i>	35. <i>Speed</i>
36. <i>Prękość</i>	36. <i>Speed</i>
37. <i>Prękość</i>	37. <i>Speed</i>
38. <i>Prękość</i>	38. <i>Speed</i>
39. <i>Prękość</i>	39. <i>Speed</i>
40. <i>Prękość</i>	40. <i>Speed</i>
41. <i>Prękość</i>	41. <i>Speed</i>
42. <i>Prękość</i>	42. <i>Speed</i>
43. <i>Prękość</i>	43. <i>Speed</i>
44. <i>Prękość</i>	44. <i>Speed</i>
45. <i>Prękość</i>	45. <i>Speed</i>
46. <i>Prękość</i>	46. <i>Speed</i>
47. <i>Prękość</i>	47. <i>Speed</i>
48. <i>Prękość</i>	48. <i>Speed</i>
49. <i>Prękość</i>	49. <i>Speed</i>
50. <i>Prękość</i>	50. <i>Speed</i>
51. <i>Prękość</i>	51. <i>Speed</i>
52. <i>Prękość</i>	52. <i>Speed</i>
53. <i>Prękość</i>	53. <i>Speed</i>
54. <i>Prękość</i>	54. <i>Speed</i>
55. <i>Prękość</i>	55. <i>Speed</i>
56. <i>Prękość</i>	56. <i>Speed</i>
57. <i>Prękość</i>	57. <i>Speed</i>
58. <i>Prękość</i>	58. <i>Speed</i>
59. <i>Prękość</i>	59. <i>Speed</i>
60. <i>Prękość</i>	60. <i>Speed</i>
61. <i>Prękość</i>	61. <i>Speed</i>
62. <i>Prękość</i>	62. <i>Speed</i>
63. <i>Prękość</i>	63. <i>Speed</i>
64. <i>Prękość</i>	64. <i>Speed</i>
65. <i>Prękość</i>	65. <i>Speed</i>
66. <i>Prękość</i>	66. <i>Speed</i>
67. <i>Prękość</i>	67. <i>Speed</i>
68. <i>Prękość</i>	68. <i>Speed</i>
69. <i>Prękość</i>	69. <i>Speed</i>
70. <i>Prękość</i>	70. <i>Speed</i>
71. <i>Prękość</i>	71. <i>Speed</i>
72. <i>Prękość</i>	72. <i>Speed</i>
73. <i>Prękość</i>	73. <i>Speed</i>
74. <i>Prękość</i>	74. <i>Speed</i>
75. <i>Prękość</i>	75. <i>Speed</i>
76. <i>Prękość</i>	76. <i>Speed</i>
77. <i>Prękość</i>	77. <i>Speed</i>
78. <i>Prękość</i>	78. <i>Speed</i>
79. <i>Prękość</i>	79. <i>Speed</i>
80. <i>Prękość</i>	80. <i>Speed</i>
81. <i>Prękość</i>	81. <i>Speed</i>
82. <i>Prękość</i>	82. <i>Speed</i>
83. <i>Prękość</i>	83. <i>Speed</i>
84. <i>Prękość</i>	84. <i>Speed</i>
85. <i>Prękość</i>	85. <i>Speed</i>
86. <i>Prękość</i>	86. <i>Speed</i>
87. <i>Prękość</i>	87. <i>Speed</i>
88. <i>Prękość</i>	88. <i>Speed</i>
89. <i>Prękość</i>	89. <i>Speed</i>
90. <i>Prękość</i>	90. <i>Speed</i>
91. <i>Prękość</i>	91. <i>Speed</i>
92. <i>Prękość</i>	92. <i>Speed</i>
93. <i>Prękość</i>	93. <i>Speed</i>
94. <i>Prękość</i>	94. <i>Speed</i>
95. <i>Prękość</i>	95. <i>Speed</i>
96. <i>Prękość</i>	96. <i>Speed</i>
97. <i>Prękość</i>	97. <i>Speed</i>
98. <i>Prękość</i>	98. <i>Speed</i>
99. <i>Prękość</i>	99. <i>Speed</i>
100. <i>Prękość</i>	100. <i>Speed</i>

Fluorescence	NONE
--------------	------

1501010101030

Comments:
This Laboratory Grown Diamond was created by Chemical Vapor Deposition

Type IIa
(CVD) growth process.