

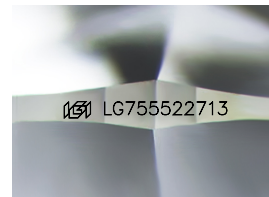
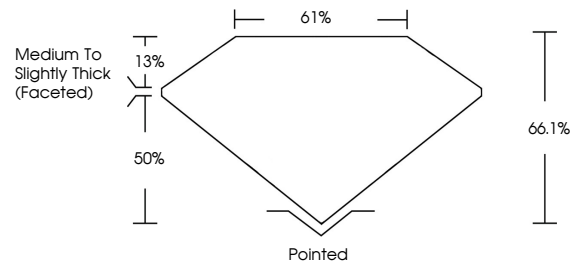


**INTERNATIONAL
GEMOLOGICAL
INSTITUTE**

ELECTRONIC COPY

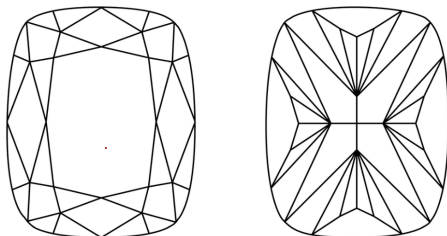
LG75552713
Report verification at [igi.org](https://www.igi.org)

PROPORTIONS



Sample Image Used

CLARITY CHARACTERISTICS



KEY TO SYMBOLS

Red symbols indicate internal characteristics.
Green symbols indicate external characteristics.

COLOR

D E F G H I J Faint Very Light Light

CLARITY

FL	IF	VVS ¹⁻²	VS ¹⁻²	SI ¹⁻²	I ¹⁻³
Flawless	Internally Flawless	Very Very Slightly Included	Very Slightly Included	Slightly Included	Included



December 6, 2025

IGI Report Number **LG755522713**

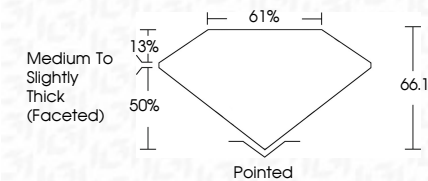
Description	LABORATORY GROWN DIAMOND
-------------	--------------------------

Shape and Cutting Style **CUSHION MODIFIED
BRILLIANT**

Measurements	8.64 X 6.01 X 3.97 MM
--------------	-----------------------

GRADING RESULTS

Carat Weight **1.65 CARAT**

Color Grade **F**Clarity Grade VVS 2

ADDITIONAL GRADING INFORMATION

Polish **EXCELLENT**Symmetry **EXCELLENT**Fluorescence **NONE**Inscription(s) LG755522713

Comments: This Laboratory Grown Diamond was created by Chemical Vapor Deposition (CVD) growth process.
Type IIa



IG



© IGI 2020, International Gemological Institute

FD - 10 20

www.igi.org

THIS DOCUMENT WAS PRODUCED WITH THE FOLLOWING SECURITY MEASURES: SPECIAL DOCUMENT PAPER, INK SCREENS, WATERMARK, BACKGROUND DESIGNS, HOLOGRAM AND OTHER SECURITY FEATURES NOT LISTED AND DO EXCEED DOCUMENT SECURITY INDUSTRY GUIDELINES

December 6, 2025
IGI Report No LG755522713
CUSHION MODIFIED BRILLIANT

1.64 x 6.01 x 3.97 MM	Carat Weight	1.65 CARAT
	Color Grade	F
	Clarity Grade	VVS 2
	Depth	66.1%
	Table	61%
	Girdle	Medium To Slightly Thick (increased)
	Culet	Pointed
	Polish	EXCELLENT
	Symmetry	EXCELLENT
	Fluorescence	NONE
	Measurements(s)	6.01 (7.57/5.92)/7.13

Comments:
This Laboratory Grown Diamond was created by Chemical Vapor Deposition (CVD) growth process.