



ELECTRONIC COPY

LABORATORY GROWN DIAMOND REPORT

LG755520594
Report verification at igi.org

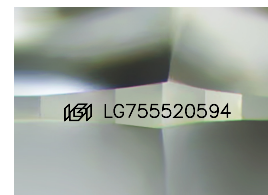
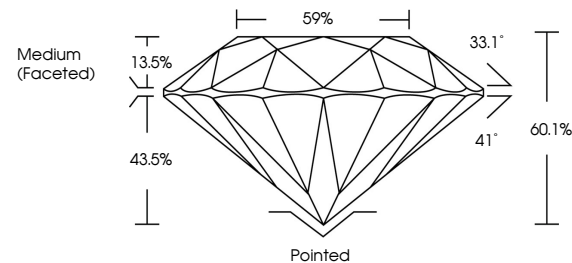
| | |
|-------------------------|--------------------------|
| December 9, 2025 | |
| IGI Report Number | LG755520594 |
| Description | LABORATORY GROWN DIAMOND |
| Shape and Cutting Style | ROUND BRILLIANT |
| Measurements | 7.47 - 7.50 X 4.49 MM |
| GRADING RESULTS | |
| Carat Weight | 1.52 CARAT |
| Color Grade | E |
| Clarity Grade | VS 1 |
| Cut Grade | IDEAL |

ADDITIONAL GRADING INFORMATION

| | |
|----------------|---|
| Polish | EXCELLENT |
| Symmetry | EXCELLENT |
| Fluorescence | NONE |
| Inscription(s) |  LG755520594 |

Comments: This Laboratory Grown Diamond was created by Chemical Vapor Deposition (CVD) growth process.
Type IIa

PROPORTIONS



Sample Image Used

COLOR

D E F G H I J Faint Very Light Light

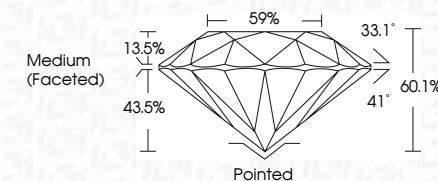
CLARITY

| FL | IF | VVS ¹⁻² | VS ¹⁻² | SI ¹⁻² | I ¹⁻³ |
|----------|---------------------|-----------------------------|------------------------|-------------------|------------------|
| Flawless | Internally Flawless | Very Very Slightly Included | Very Slightly Included | Slightly Included | Included |

LABORATORY GROWN DIAMOND REPORT



| | |
|-------------------------|--------------------------|
| December 9, 2025 | |
| IGI Report Number | LG755520594 |
| Description | LABORATORY GROWN DIAMOND |
| Shape and Cutting Style | ROUND BRILLIANT |
| Measurements | 7.47 - 7.50 X 4.49 MM |
| GRADING RESULTS | |
| Carat Weight | 1.52 CARAT |
| Color Grade | E |
| Clarity Grade | VS 1 |
| Cut Grade | IDEAL |



ADDITIONAL GRADING INFORMATION

| | |
|---|---|
| Polish | EXCELLENT |
| Symmetry | EXCELLENT |
| Fluorescence | NONE |
| Inscription(s) |  LG755520594 |
| <p>Comments: This Laboratory Grown Diamond was created by Chemical Vapor Deposition (CVD) growth process.</p> <p>Type IIa</p> | |



© IGI 2020, International Gemological Institute

FD - 10 20



THIS DOCUMENT WAS PRODUCED WITH THE FOLLOWING SECURITY MEASURES: SPECIAL DOCUMENT PAPER, INK SCREENS, WATERMARK, BACKGROUND DESIGNS, HOLOGRAM AND OTHER SECURITY FEATURES NOT LISTED AND DO EXCEED DOCUMENT SECURITY INDUSTRY GUIDELINES

www.igi.org

December 9, 2025
GI Report No LG755520594
ROUND BRILLIANT

| | |
|-----------------------|--------------------|
| ROUND BRILLIANT | 1.52 CARAT |
| 7.47 - 7.50 X 4.49 MM | E |
| Carat Weight | VS 1 |
| Color Grade | IDEAL |
| Clarity Grade | 60.1% |
| Cut Grade | 59% |
| Depth | Medium (Excellent) |
| Table | |
| Girdle | |

| | Pointed | EXCELLENT | EXCELLENT | NONE |
|--------------|---------|-----------|-----------|------|
| Culet | | | | |
| Polish | | | | |
| Symmetry | | | | |
| Fluorescence | | | | |

Comments:
This Laboratory Grown Diamond was created by Chemical Vapor Deposition (CVD) growth process.