



**ELECTRONIC COPY**

## LABORATORY GROWN DIAMOND REPORT

December 9, 2025	
IGI Report Number	LG755520332
Description	LABORATORY GROWN DIAMOND
Shape and Cutting Style	ROUND BRILLIANT
Measurements	6.56 - 6.60 X 4.03 MM
GRADING RESULTS	
Carat Weight	1.05 CARAT
Color Grade	E
Clarity Grade	VVS 2
Cut Grade	IDEAL

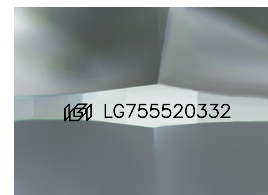
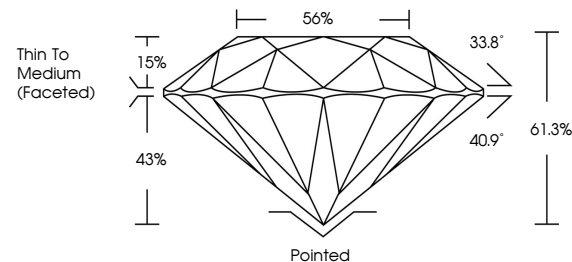
### ADDITIONAL GRADING INFORMATION

Polish	EXCELLENT
Symmetry	EXCELLENT
Fluorescence	NONE
Inscription(s)	 LG755520332

Comments: As Grown - No indication of post-growth treatment.  
This Laboratory Grown Diamond was created by High Pressure High Temperature (HPHT) growth process.  
Type II

LG755520332  
Report verification at [igi.org](https://igi.org)

## PROPORTIONS



Sample Image Used

COLOR

D E F G H I J Faint Very Light Light

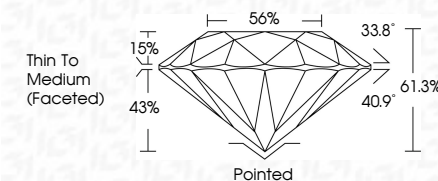
## CLARITY

FL	IF	VVS <sup>1-2</sup>	VS <sup>1-2</sup>	SI <sup>1-2</sup>	I <sup>1-3</sup>
Flawless	Internally Flawless	Very Very Slightly Included	Very Slightly Included	Slightly Included	Included

## LABORATORY GROWN DIAMOND REPORT



December 9, 2025	
IGI Report Number	LG755520332
Description	LABORATORY GROWN DIAMOND
Shape and Cutting Style	ROUND BRILLIANT
Measurements	6.56 - 6.60 X 4.03 MM
GRADING RESULTS	
Carat Weight	1.05 CARAT
Color Grade	E
Clarity Grade	VVS 2
Cut Grade	IDEAL



### ADDITIONAL GRADING INFORMATION

Polish	EXCELLENT
Symmetry	EXCELLENT
Fluorescence	NONE
Inscription(s)	<del>(G)</del> LG755520332
Comments: As Grown - No indication of post-growth treatment.	
This Laboratory Grown Diamond was created by High Pressure High Temperature (HPHT) growth process.	
Type II	



© IGI 2020, International Gemological Institute

FD - 10 20

**www.igi.org**



THIS DOCUMENT WAS PRODUCED WITH THE FOLLOWING SECURITY MEASURES: SPECIAL DOCUMENT PAPER, INK SCREENS, WATERMARK, BACKGROUND DESIGNS, HOLOGRAM AND OTHER SECURITY FEATURES NOT LISTED AND DO EXCEED DOCUMENT SECURITY INDUSTRY GUIDELINE

December 9, 2025  
IGI Report No LG755520332  
ROUND BRILLIANT

6.56 - 6.60 X 4.03 MM	Carat Weight	1.05 CARAT
	Color Grade	E
	Clarity Grade	VVS 2
	Cut Grade	IDEAL
	Depth	61.9%
	Table	56%
	Girdle	Thin To Medium (faced)
	Culet	Pointed
	Polish	EXCELLENT
	Symmetry	EXCELLENT
	Fluorescence	NONE

**Comments:**  
As Grown - No indication of post-growth treatment  
This Laboratory Grown Diamond was created by High Pressure High Temperature (HPHT) growth process.