



ELECTRONIC COPY

LG755520278
Report verification at igi.org



December 22, 2025
IGI Report Number **LG755520278**
Description **LABORATORY GROWN DIAMOND**
Shape and Cutting Style **CUSHION MODIFIED BRILLIANT**
Measurements **10.28 X 9.01 X 6.10 MM**
GRADING RESULTS
Carat Weight **5.16 CARATS**
Color Grade **FANCY YELLOW BROWN**
Clarity Grade **VS 2**

December 22, 2025
IGI Report Number **LG755520278**
Description **LABORATORY GROWN DIAMOND**
Shape and Cutting Style **CUSHION MODIFIED BRILLIANT**
Measurements **10.28 X 9.01 X 6.10 MM**

GRADING RESULTS

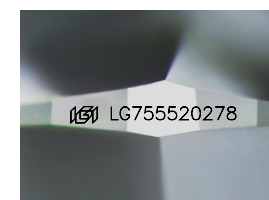
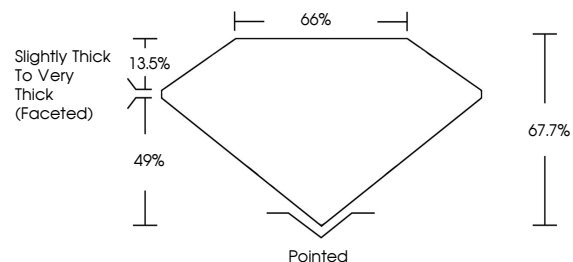
Carat Weight **5.16 CARATS**
Color Grade **FANCY YELLOW BROWN**
Clarity Grade **VS 2**

ADDITIONAL GRADING INFORMATION

Polish **EXCELLENT**
Symmetry **EXCELLENT**
Fluorescence **NONE**
Inscription(s) **IGI LG755520278**

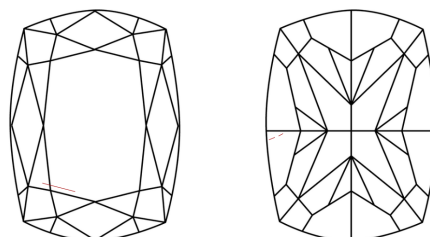
Comments: This Laboratory Grown Diamond was created by Chemical Vapor Deposition (CVD) growth process.

PROPORTIONS



Sample Image Used

CLARITY CHARACTERISTICS



KEY TO SYMBOLS

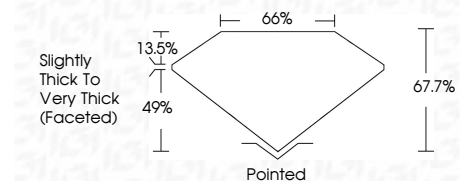
Red symbols indicate internal characteristics.
Green symbols indicate external characteristics.

COLOR

D E F G H I J Faint Very Light Light

CLARITY

FL	IF	VS ¹⁻²	VS ¹⁻²	SI ¹⁻²	I ¹⁻³
Flawless	Internally Flawless	Very Very Slightly Included	Very Slightly Included	Slightly Included	Included



ADDITIONAL GRADING INFORMATION

Polish **EXCELLENT**
Symmetry **EXCELLENT**
Fluorescence **NONE**
Inscription(s) **IGI LG755520278**
Comments: This Laboratory Grown Diamond was created by Chemical Vapor Deposition (CVD) growth process.



IGI



December 22, 2025
IGI Report No LG755520278
CUSHION MODIFIED BRILLIANT
10.28 X 9.01 X 6.10 MM
5.16 CARATS
FANCY YELLOW BROWN
VS 2
67.7%
66%
Slightly Thick To Very Thick (Faceted)
Pointed
EXCELLENT
EXCELLENT
NONE
IGI LG755520278
Comments: This Laboratory Grown Diamond was created by Chemical Vapor Deposition (CVD) growth process.