



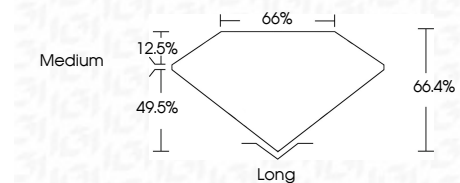
ELECTRONIC COPY

LG755519829
Report verification at igi.org



December 11, 2025
IGI Report Number **LG755519829**
Description **LABORATORY GROWN DIAMOND**
Shape and Cutting Style **EMERALD CUT**
Measurements **9.45 X 6.97 X 4.63 MM**

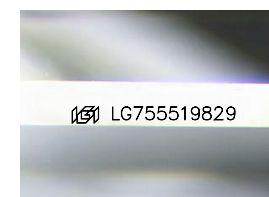
GRADING RESULTS
Carat Weight **2.97 CARATS**
Color Grade **F**
Clarity Grade **VS 1**



ADDITIONAL GRADING INFORMATION
Polish **EXCELLENT**
Symmetry **EXCELLENT**
Fluorescence **NONE**
Inscription(s) **IGI LG755519829**
Comments: This Laboratory Grown Diamond was created by Chemical Vapor Deposition (CVD) growth process. Type IIa

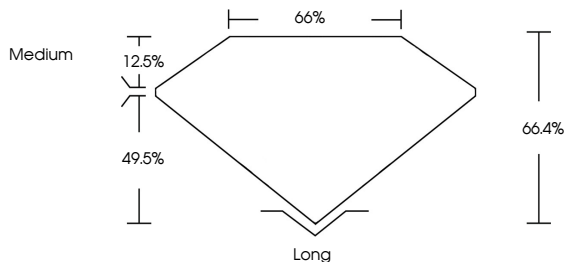


December 11, 2025
IGI Report No LG755519829
EMERALD CUT
2.97 CARATS
F
9.45 X 6.97 X 4.63 MM
Color Grade
VS 1
Depth 66.4%
Table 65%
Girdle
Medium
Long
Culet
Polish
Symmetry
Fluorescence
Inscription(s)
**EXCELLENT
EXCELLENT
NONE
IGI LG755519829**
Comments: This Laboratory Grown Diamond was created by Chemical Vapor Deposition (CVD) growth process. Type IIa

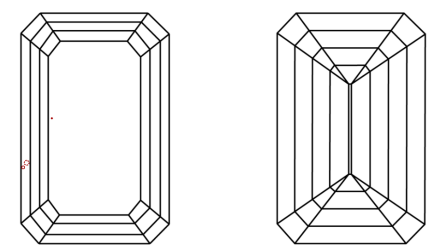


Sample Image Used

PROPORTIONS



CLARITY CHARACTERISTICS



KEY TO SYMBOLS
Red symbols indicate internal characteristics.
Green symbols indicate external characteristics.

COLOR

D	E	F	G	H	I	J	Faint	Very Light	Light
---	---	---	---	---	---	---	-------	------------	-------

CLARITY

FL	IF	VS ¹⁻²	VS ¹⁻²	SI ¹⁻²	I ¹⁻³
Flawless	Internally Flawless	Very Very Slightly Included	Very Slightly Included	Slightly Included	Included

