



ELECTRONIC COPY

LG755517731
Report verification at igi.org



December 15, 2025
IGI Report Number **LG755517731**
Description **LABORATORY GROWN DIAMOND**
Shape and Cutting Style **CUT CORNERED
RECTANGULAR MIXED CUT**
Measurements **11.08 X 7.53 X 5.18 MM**
GRADING RESULTS
Carat Weight **4.04 CARATS**
Color Grade **FANCY VIVID YELLOW**
Clarity Grade **VS 1**

LABORATORY GROWN DIAMOND REPORT

December 15, 2025
IGI Report Number **LG755517731**
Description **LABORATORY GROWN DIAMOND**
Shape and Cutting Style **CUT CORNERED RECTANGULAR
MIXED CUT**
Measurements **11.08 X 7.53 X 5.18 MM**

GRADING RESULTS

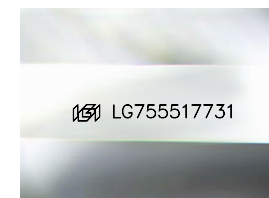
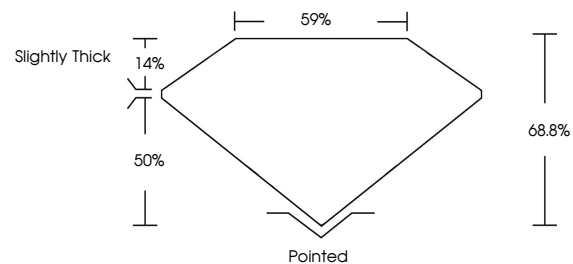
Carat Weight **4.04 CARATS**
Color Grade **FANCY VIVID YELLOW**
Clarity Grade **VS 1**

ADDITIONAL GRADING INFORMATION

Polish **EXCELLENT**
Symmetry **EXCELLENT**
Fluorescence **NONE**
Inscription(s) **IGI LG755517731**

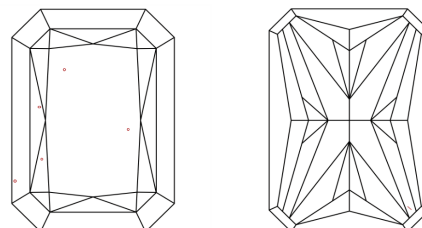
Comments: This Laboratory Grown Diamond was created by Chemical Vapor Deposition (CVD) growth process.

PROPORTIONS



Sample Image Used

CLARITY CHARACTERISTICS



KEY TO SYMBOLS

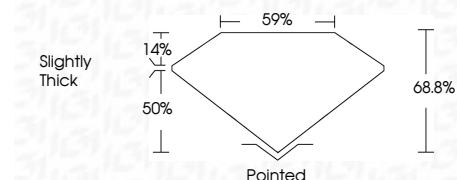
Red symbols indicate internal characteristics.
Green symbols indicate external characteristics.

COLOR

D E F G H I J Faint Very Light Light

CLARITY

| FL | IF | VS ¹⁻² | VVS ¹⁻² | S ¹⁻² | I ¹⁻³ |
|----------|---------------------|-----------------------------|------------------------|-------------------|------------------|
| Flawless | Internally Flawless | Very Very Slightly Included | Very Slightly Included | Slightly Included | Included |



ADDITIONAL GRADING INFORMATION

Polish **EXCELLENT**
Symmetry **EXCELLENT**
Fluorescence **NONE**
Inscription(s) **IGI LG755517731**
Comments: This Laboratory Grown Diamond was created by Chemical Vapor Deposition (CVD) growth process.



December 15, 2025
IGI Report No. LG755517731
CUT CORNERED RECT. MIXED CUT
4.04 CARATS
FANCY VIVID YELLOW
VS 1
68.8%
59%
Slightly Thick
Pointed
EXCELLENT
EXCELLENT
NONE
IGI LG755517731
Comments: This Laboratory Grown Diamond was created by Chemical Vapor Deposition (CVD) growth process.