



**ELECTRONIC COPY**

## LABORATORY GROWN DIAMOND REPORT

December 6, 2025	
IGI Report Number	LG755516456
Description	LABORATORY GROWN DIAMOND
Shape and Cutting Style	CUSHION MODIFIED BRILLIANT
Measurements	9.34 X 7.13 X 4.89 MM

## GRADING RESULTS

Carat Weight	2.55 CARATS
Color Grade	E
Clarity Grade	VS 1

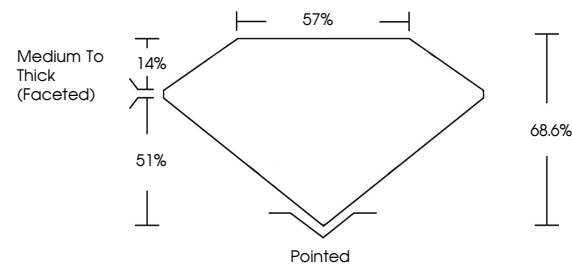
### ADDITIONAL GRADING INFORMATION

Polish	EXCELLENT
Symmetry	EXCELLENT
Fluorescence	NONE
Inscription(s)	 LG755516456

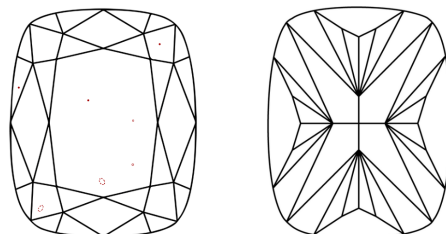
Comments: This Laboratory Grown Diamond was created by Chemical Vapor Deposition (CVD) growth process.  
Type IIa

LG755516456  
Report verification at [igi.org](https://igi.org)

## PROPORTIONS

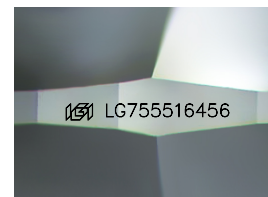


## CLARITY CHARACTERISTICS



## KEY TO SYMBOLS

Red symbols indicate internal characteristics.  
Green symbols indicate external characteristics.



Sample Image Used

**COLOR**

D E F G H I J Faint Very Light Light

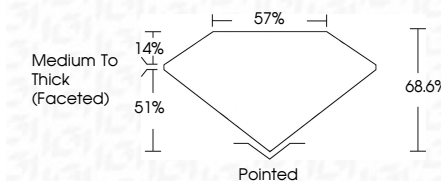
## CLARITY

FL	IF	VVS <sup>1-2</sup>	VS <sup>1-2</sup>	SI <sup>1-2</sup>	I <sup>1-3</sup>
Flawless	Internally Flawless	Very Very Slightly Included	Very Slightly Included	Slightly Included	Included

## LABORATORY GROWN DIAMOND REPORT



December 6, 2025	
IGI Report Number	LG755516456
Description	LABORATORY GROWN DIAMOND
Shape and Cutting Style	CUSHION MODIFIED BRILLIANT
Measurements	9.34 X 7.13 X 4.89 MM
GRADING RESULTS	
Carat Weight	2.55 CARATS
Color Grade	E
Clarity Grade	VS 1



### ADDITIONAL GRADING INFORMATION

Polish	EXCELLENT
Symmetry	EXCELLENT
Fluorescence	NONE
Inscription(s)	 LG755516456
<p>Comments: This Laboratory Grown Diamond was created by Chemical Vapor Deposition (CVD) growth process.</p> <p>Type IIa</p>	



**www.igi.org**

© IGI 2020, International Gemological Institute

FD - 10 20



THIS DOCUMENT WAS PRODUCED WITH THE FOLLOWING SECURITY MEASURES: SPECIAL DOCUMENT PAPER, INK SCREENS, WATERMARK, BACKGROUND DESIGNS, HOLOGRAM AND OTHER SECURITY FEATURES NOT LISTED AND DO EXCEED DOCUMENT SECURITY INDUSTRY GUIDELINE

December 4, 2026	2.85 CARATS	E	VS 1	68.6%	57%	Medium to Thick (Faceted)	Pointed	EXCELLENT	EXCELLENT	NONE	689 LG755514565
GI Report No LG755514565											
FUSION MODIFIED BRILLIANT											
34 X 7.13 X 4.99 MM											
Color Weight											
Color Grade											
Clarity Grade											
Depth											
Table											
Girdle											
Symmetry											
Fluorescence											
Inscriptions(s)											

Comments: This is a Very Gray Diamond was created by Chemical Vapor Deposition (CVD) growth process.

Type IIa

**Comments:**  
This Laboratory Grown Diamond was  
created by Chemical Vapor Deposition  
(CVD) growth process.