



**ELECTRONIC COPY**

## LABORATORY GROWN DIAMOND REPORT

|                         |                          |
|-------------------------|--------------------------|
| December 6, 2025        |                          |
| IGI Report Number       | LG755516241              |
| Description             | LABORATORY GROWN DIAMOND |
| Shape and Cutting Style | ROUND BRILLIANT          |
| Measurements            | 7.39 - 7.43 X 4.57 MM    |

## GRADING RESULTS

|               |            |
|---------------|------------|
| Carat Weight  | 1.55 CARAT |
| Color Grade   | D          |
| Clarity Grade | VVS 1      |
| Cut Grade     | IDEAL      |

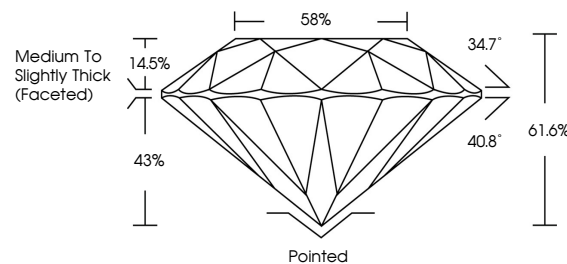
### ADDITIONAL GRADING INFORMATION

|                |   |
|----------------|---|
| Polish         | EXCELLENT   |
| Symmetry       | EXCELLENT   |
| Fluorescence   | NONE  |
| Inscription(s) |  LG755516241 |

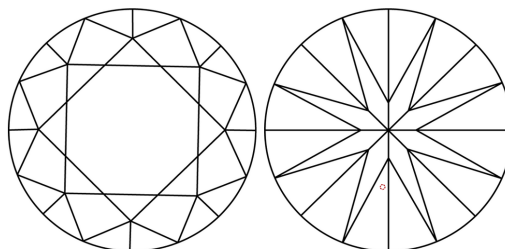
Comments: As Grown - No indication of post-growth treatment.  
This Laboratory Grown Diamond was created by High Pressure High Temperature (HPHT) growth process.  
Type II

LG755516241  
Report verification at [igi.org](https://igi.org)

## PROPORTIONS

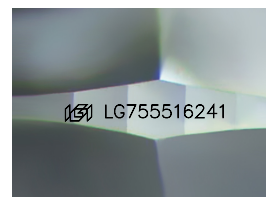


## CLARITY CHARACTERISTICS



## KEY TO SYMBOLS

Red symbols indicate internal characteristics.  
Green symbols indicate external characteristics.



Sample Image Used

## COLOR

D E F G H I J Faint Very Light Light

## CLARITY

| FL       | IF                  | VVS <sup>1-2</sup>          | VS <sup>1-2</sup>      | SI <sup>1-2</sup> | I <sup>1-3</sup> |
|----------|---------------------|-----------------------------|------------------------|-------------------|------------------|
| Flawless | Internally Flawless | Very Very Slightly Included | Very Slightly Included | Slightly Included | Included         |

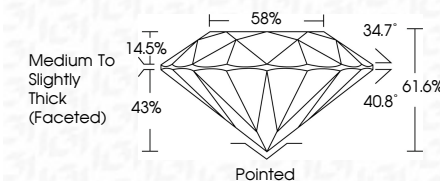
## LABORATORY GROWN DIAMOND REPORT




|                         |                          |
|-------------------------|--------------------------|
| December 6, 2025        |                          |
| IGI Report Number       | LG755516241              |
| Description             | LABORATORY GROWN DIAMOND |
| Shape and Cutting Style | ROUND BRILLIANT          |
| Measurements            | 7.39 - 7.43 X 4.57 MM    |

## GRADING RESULTS

|               |            |
|---------------|------------|
| Carat Weight  | 1.55 CARAT |
| Color Grade   | D          |
| Clarity Grade | VVS 1      |
| Cut Grade     | IDEAL      |



### ADDITIONAL GRADING INFORMATION

|  |   |
|--|---|
| Polish   | EXCELLENT   |
| Symmetry   | EXCELLENT   |
| Fluorescence   | NONE  |
| Inscription(s)   |  LG755516241 |
| Comments: As Grown - No indication of post-growth treatment.                                       |   |
| This Laboratory Grown Diamond was created by High Pressure High Temperature (HPHT) growth process. |   |
| Type II  |   |



© IGI 2020, International Gemological Institute

FD - 10 20



THIS DOCUMENT WAS PRODUCED WITH THE FOLLOWING SECURITY MEASURES: SPECIAL DOCUMENT PAPER, INK SCREENS, WATERMARK, BACKGROUND DESIGNS, HOLOGRAM, AND OTHER SECURITY FEATURES NOT LISTED AND DO EXCEED DOCUMENT SECURITY INDUSTRY GUIDELINES.

**www.igi.org**

December 6, 2025  
 IGI Report No LG7558  
 ROUND BRILLIANT

|                       |               |                                    |
|-----------------------|---------------|------------------------------------|
| 39.9 - 7.43 X 4.57 MM | Carat Weight  | 1.55 CARAT                         |
|                       | Color Grade   | D                                  |
|                       | Clarity Grade | VVS 1                              |
|                       | Cut Grade     | IDEAL                              |
|                       | Depth         | 61.6%                              |
|                       | Table         | 58%                                |
|                       | Grade         | Medium to Slightly Thick (Faceted) |
|                       | Culet         | Pointed                            |
|                       | Polish        | EXCELLENT                          |
|                       | Symmetry      | EXCELLENT                          |
|                       | Fluorescence  | NONE                               |
|                       | Reference No. | 4641 (27555) 1601                  |

**Comments:**  
As Grown - No indication of post-growth treatment.