



ELECTRONIC COPY

LG755515958
Report verification at igi.org



December 8, 2025

IGI Report Number **LG755515958**

Description **LABORATORY GROWN DIAMOND**

Shape and Cutting Style **EMERALD CUT**

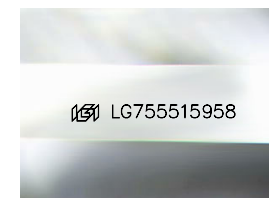
Measurements **9.68 X 6.66 X 4.61 MM**

GRADING RESULTS

Carat Weight **2.92 CARATS**

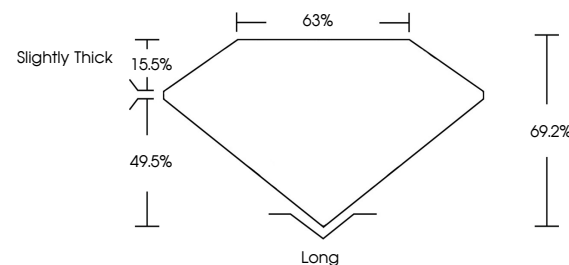
Color Grade **G**

Clarity Grade **VS 1**

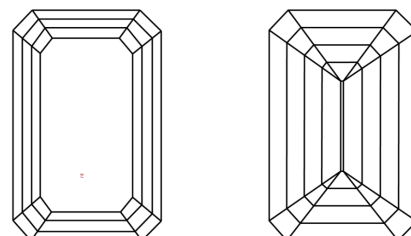


Sample Image Used

PROPORTIONS



CLARITY CHARACTERISTICS



KEY TO SYMBOLS

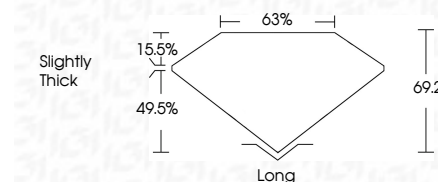
Red symbols indicate internal characteristics.
Green symbols indicate external characteristics.

COLOR

D E F G H I J Faint Very Light Light

CLARITY

FL	IF	VS ¹⁻²	VS ¹⁻²	SI ¹⁻²	I ¹⁻³
Flawless	Internally Flawless	Very Very Slightly Included	Very Slightly Included	Slightly Included	Included



ADDITIONAL GRADING INFORMATION

Polish **EXCELLENT**

Symmetry **EXCELLENT**

Fluorescence **NONE**

Inscription(s) **IGI LG755515958**

Comments: This Laboratory Grown Diamond was created by Chemical Vapor Deposition (CVD) growth process. Type IIa



IGI



December 8, 2025	2.92 CARATS	G	VS 1	69.2%	63%	Slightly Thick	Long
IGI Report No LG755515958	9.68 X 6.66 X 4.61 MM	EMERALD CUT	Color Grade	Depth	Table	Girdle	Culet
			Clarity Grade	Symmetry	Fluorescence	Inscription(s)	Polish

Comments: This Laboratory Grown Diamond was created by Chemical Vapor Deposition (CVD) growth process. Type IIa