



December 18, 2025

IGI Report Number LG755514407
TRAPEZE BRILLIANT CUT
LABORATORY GROWN DIAMOND
6.45 X 4.14 X 2.42 MM

Carat Weight 0.53 CARAT
Color Grade E
Clarity Grade VVS 2
Polish VERY GOOD
Symmetry VERY GOOD
Fluorescence NONE
Inscription(s) IGI LG755514407

Comments: As Grown - No indication of post-growth treatment. This Laboratory Grown Diamond was created by High Pressure High Temperature (HPHT) growth process. Type II

LABORATORY GROWN DIAMOND REPORT

December 18, 2025
IGI Report Number **LG755514407**
Description **LABORATORY GROWN DIAMOND**
Shape and Cutting Style **TRAPEZE BRILLIANT CUT**
Measurements **6.45 X 4.14 X 2.42 MM**

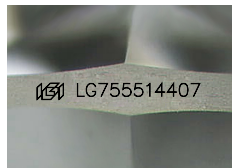
GRADING RESULTS

Carat Weight 0.53 CARAT
Color Grade E
Clarity Grade VVS 2

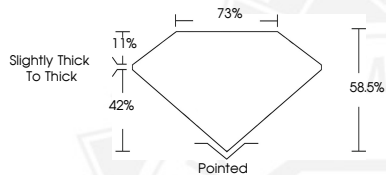
ADDITIONAL GRADING INFORMATION

Polish VERY GOOD
Symmetry VERY GOOD
Fluorescence NONE
Inscription(s) IGI LG755514407

Comments: As Grown - No indication of post-growth treatment. This Laboratory Grown Diamond was created by High Pressure High Temperature (HPHT) growth process. Type II



Sample Image Used



December 18, 2025

IGI Report Number LG755514407
TRAPEZE BRILLIANT CUT
LABORATORY GROWN DIAMOND
6.45 X 4.14 X 2.42 MM

Carat Weight 0.53 CARAT
Color Grade E
Clarity Grade VVS 2
Polish VERY GOOD
Symmetry VERY GOOD
Fluorescence NONE
Inscription(s) IGI LG755514407

Comments: As Grown - No indication of post-growth treatment. This Laboratory Grown Diamond was created by High Pressure High Temperature (HPHT) growth process. Type II



THIS DOCUMENT WAS PRODUCED WITH THE FOLLOWING SECURITY MEASURES: SPECIAL DOCUMENT PAPER, INK SCREENS, WATERMARK, BACKGROUND DESIGNS, HOLOGRAM AND OTHER SECURITY FEATURES NOT LISTED AND DO EXCEED DOCUMENT SECURITY INDUSTRY GUIDELINES.