



ELECTRONIC COPY

LABORATORY GROWN DIAMOND REPORT

December 6, 2025	
IGI Report Number	LG755510820
Description	LABORATORY GROWN DIAMOND
Shape and Cutting Style	PRINCESS CUT
Measurements	5.54 X 5.48 X 3.71 MM

GRADING RESULTS

Carat Weight	1.00 CARAT
Color Grade	D
Clarity Grade	VS 2

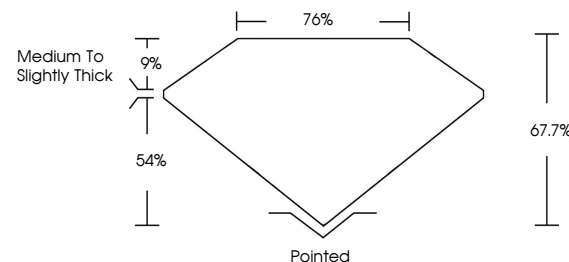
ADDITIONAL GRADING INFORMATION

Polish	VERY GOOD
Symmetry	EXCELLENT
Fluorescence	NONE
Inscription(s)	151 LG755510820

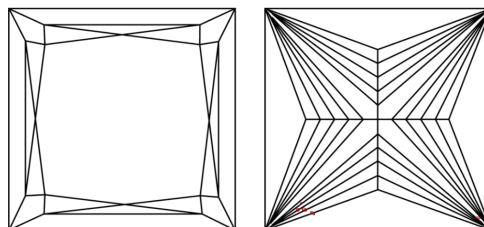
Comments: This Laboratory Grown Diamond was created by Chemical Vapor Deposition (CVD) growth process.
Type IIa

LG755510820
Report verification at lgi.org

PROPORTIONS

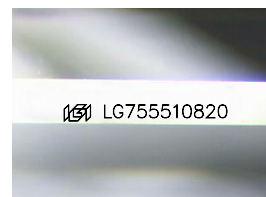


CLARITY CHARACTERISTICS



KEY TO SYMBOLS

Red symbols indicate internal characteristics.
Green symbols indicate external characteristics.



Sample Image Used

COLOR

D E F G H I J Faint Very Light Light

CLARITY

FL	IF	VVS ¹⁻²	VS ¹⁻²	SI ¹⁻²	I ¹⁻³
Flawless	Internally Flawless	Very Very Slightly Included	Very Slightly Included	Slightly Included	Included

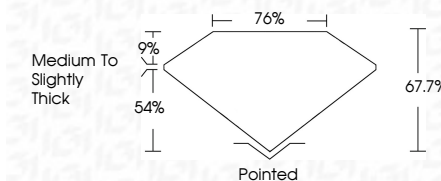
LABORATORY GROWN DIAMOND REPORT



December 6, 2025	
IGI Report Number	LG755510820
Description	LABORATORY GROWN DIAMOND
Shape and Cutting Style	PRINCESS CUT
Measurements	5.54 X 5.48 X 3.71 MM

GRADING RESULTS

Carat Weight	1.00 CARAT
Color Grade	D
Clarity Grade	VS 2



ADDITIONAL GRADING INFORMATION

Polish	VERY GOOD
Symmetry	EXCELLENT
Fluorescence	NONE
Inscription(s)	 LG755510820

Comments: This Laboratory Grown Diamond was created by Chemical Vapor Deposition (CVD) growth process.
Type IIa



© IGI 2020, International Gemological Institute

FD - 10 20



THIS DOCUMENT WAS PRODUCED WITH THE FOLLOWING SECURITY MEASURES: SPECIAL DOCUMENT PAPER, INK SCREENS, WATERMARK, BACKGROUND DESIGNS, HOLOGRAM AND OTHER SECURITY FEATURES NOT LISTED AND DO EXCEED DOCUMENT SECURITY INDUSTRY GUIDELINE

www.igi.org

December 6, 2025
IGJ Report No. IG755

<p>GI Report No LG755510820</p> <p>PRECINCESS CUT</p> <p>5.54 X 5.48 X 3.71 MM</p>	<p>Carat Weight</p> <p>Color Grade</p> <p>Clarity Grade</p> <p>Depth</p> <p>Table</p> <p>Girdle</p> <p>Culet</p> <p>Polish</p> <p>Symmetry</p> <p>Fluorescence</p>	<p>1.00 CARAT</p> <p>D</p> <p>VS 2</p> <p>67.7%</p> <p>76%</p> <p>Medium to Slightly Thick</p> <p>Polished</p> <p>VERY GOOD</p> <p>EXCELLENT</p> <p>NONE</p> <p>Daylight/UV</p>
--	--	---

Comments:
This Laboratory Grown Diamond was
created by Chemical Vapor Deposition
(CVD) growth process.