



LABORATORY GROWN DIAMOND REPORT

December 29, 2025
 IGI Report Number **LG755510086**
 Description **LABORATORY GROWN DIAMOND**
 Shape and Cutting Style **OVAL BRILLIANT**
 Measurements **7.75 X 5.08 X 2.91 MM**

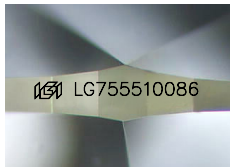
GRADING RESULTS

Carat Weight **0.71 CARAT**
 Color Grade **E**
 Clarity Grade **VS 1**

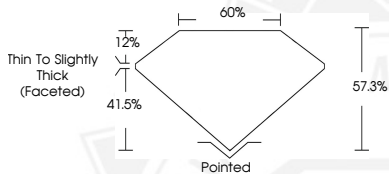
ADDITIONAL GRADING INFORMATION

Polish **GOOD**
 Symmetry **VERY GOOD**
 Fluorescence **NONE**
 Inscription(s) **IGI LG755510086**

Comments: This Laboratory Grown Diamond was created by Chemical Vapor Deposition (CVD) growth process. Type IIa



Sample Image Used



December 29, 2025
 IGI Report Number **LG755510086**
OVAL BRILLIANT
LABORATORY GROWN DIAMOND
7.75 X 5.08 X 2.91 MM
 Carat Weight **0.71 CARAT**
 Color Grade **E**
 Clarity Grade **VS 1**
 Polish **GOOD**
 Symmetry **VERY GOOD**
 Fluorescence **NONE**
 Inscription(s) **IGI LG755510086**

Comments: This Laboratory Grown Diamond was created by Chemical Vapor Deposition (CVD) growth process. Type IIa



December 29, 2025
 IGI Report Number **LG755510086**
OVAL BRILLIANT
LABORATORY GROWN DIAMOND
7.75 X 5.08 X 2.91 MM
 Carat Weight **0.71 CARAT**
 Color Grade **E**
 Clarity Grade **VS 1**
 Polish **GOOD**
 Symmetry **VERY GOOD**
 Fluorescence **NONE**
 Inscription(s) **IGI LG755510086**

Comments: This Laboratory Grown Diamond was created by Chemical Vapor Deposition (CVD) growth process. Type IIa



THIS DOCUMENT WAS PRODUCED WITH THE FOLLOWING SECURITY MEASURES: SPECIAL DOCUMENT PAPER, INK SCREENS, WATERMARK, BACKGROUND DESIGNS, HOLOGRAM AND OTHER SECURITY FEATURES NOT LISTED AND DO EXCEED DOCUMENT SECURITY INDUSTRY GUIDELINES.