



# INTERNATIONAL GEMOLOGICAL INSTITUTE

## LABORATORY GROWN DIAMOND REPORT

December 20, 2025  
IGI Report Number **LG755510018**  
Description **LABORATORY GROWN DIAMOND**  
Shape and Cutting Style **OVAL BRILLIANT**  
Measurements **6.45 X 4.67 X 2.88 MM**

### GRADING RESULTS

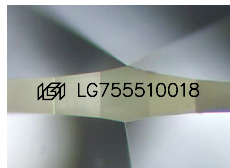
Carat Weight **0.54 CARAT**  
Color Grade **E**  
Clarity Grade **VS 2**

### ADDITIONAL GRADING INFORMATION

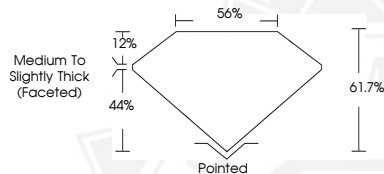
Polish **GOOD**  
Symmetry **VERY GOOD**  
Fluorescence **NONE**  
Inscription(s) **IGI LG755510018**

Comments: This Laboratory Grown Diamond was created by Chemical Vapor Deposition (CVD) growth process. Type IIa

ELECTRONIC COPY



Sample Image Used



December 20, 2025  
IGI Report Number **LG755510018**  
**OVAL BRILLIANT**  
**LABORATORY GROWN DIAMOND**  
**6.45 X 4.67 X 2.88 MM**  
Carat Weight **0.54 CARAT**  
Color Grade **E**  
Clarity Grade **VS 2**  
Polish **GOOD**  
Symmetry **VERY GOOD**  
Fluorescence **NONE**  
Inscription(s) **IGI LG755510018**

Comments: This Laboratory Grown Diamond was created by Chemical Vapor Deposition (CVD) growth process. Type IIa



December 20, 2025  
IGI Report Number **LG755510018**  
**OVAL BRILLIANT**  
**LABORATORY GROWN DIAMOND**  
**6.45 X 4.67 X 2.88 MM**  
Carat Weight **0.54 CARAT**  
Color Grade **E**  
Clarity Grade **VS 2**  
Polish **GOOD**  
Symmetry **VERY GOOD**  
Fluorescence **NONE**  
Inscription(s) **IGI LG755510018**

Comments: This Laboratory Grown Diamond was created by Chemical Vapor Deposition (CVD) growth process. Type IIa



THIS DOCUMENT WAS PRODUCED WITH THE FOLLOWING SECURITY MEASURES: SPECIAL DOCUMENT PAPER, INK SCREENS, WATERMARK, BACKGROUND DESIGNS, HOLOGRAM AND OTHER SECURITY FEATURES NOT LISTED AND DO EXCEED DOCUMENT SECURITY INDUSTRY GUIDELINES.

For terms & conditions and to verify this report, please visit [www.igi.org](http://www.igi.org)