



INTERNATIONAL GEMOLOGICAL INSTITUTE

LABORATORY GROWN DIAMOND REPORT

December 15, 2025

IGI Report Number

LG755509904

Description

LABORATORY GROWN DIAMOND

Shape and Cutting Style

OVAL BRILLIANT

Measurements

7.33 X 4.94 X 3.26 MM

GRADING RESULTS

Carat Weight

0.76 CARAT

Color Grade

F

Clarity Grade

VS 1

ADDITIONAL GRADING INFORMATION

Polish

VERY GOOD

Symmetry

VERY GOOD

Fluorescence

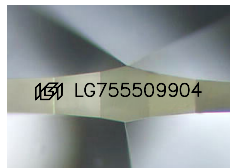
NONE

Inscription(s)

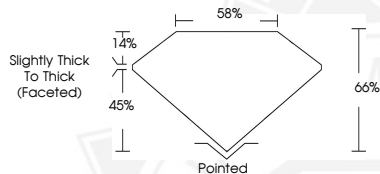
IGI LG755509904

Comments: This Laboratory Grown Diamond was created by Chemical Vapor Deposition (CVD) growth process. Type IIa

ELECTRONIC COPY



Sample Image Used



December 15, 2025

IGI Report Number LG755509904

OVAL BRILLIANT

LABORATORY GROWN DIAMOND

7.33 X 4.94 X 3.26 MM

Carat Weight 0.76 CARAT

Color Grade F

Clarity Grade VS 1

Polish VERY GOOD

Symmetry VERY GOOD

Fluorescence NONE

Inscription(s) IGI LG755509904

Comments: This Laboratory Grown Diamond was created by Chemical Vapor Deposition (CVD) growth process. Type IIa



December 15, 2025

IGI Report Number LG755509904

OVAL BRILLIANT

LABORATORY GROWN DIAMOND

7.33 X 4.94 X 3.26 MM

Carat Weight 0.76 CARAT

Color Grade F

Clarity Grade VS 1

Polish VERY GOOD

Symmetry VERY GOOD

Fluorescence NONE

Inscription(s) IGI LG755509904

Comments: This Laboratory Grown Diamond was created by Chemical Vapor Deposition (CVD) growth process. Type IIa



THIS DOCUMENT WAS PRODUCED WITH THE FOLLOWING SECURITY MEASURES: SPECIAL DOCUMENT PAPER, INK SCREENS, WATERMARK, BACKGROUND DESIGNS, HOLOGRAM AND OTHER SECURITY FEATURES NOT LISTED AND DO EXCEED DOCUMENT SECURITY INDUSTRY GUIDELINES.

For terms & conditions and to verify this report, please visit www.igi.org