



ELECTRONIC COPY

LG755503558
Report verification at igi.org



December 15, 2025
IGI Report Number **LG755503558**
Description **LABORATORY GROWN DIAMOND**
Shape and Cutting Style **SQUARE CUSHION MODIFIED BRILLIANT**
Measurements **7.77 X 7.37 X 5.12 MM**
GRADING RESULTS
Carat Weight **2.51 CARATS**
Color Grade **FANCY VIVID GREEN BLUE**
Clarity Grade **SI 1**

December 15, 2025
IGI Report Number **LG755503558**
Description **LABORATORY GROWN DIAMOND**
Shape and Cutting Style **SQUARE CUSHION MODIFIED BRILLIANT**
Measurements **7.77 X 7.37 X 5.12 MM**

GRADING RESULTS

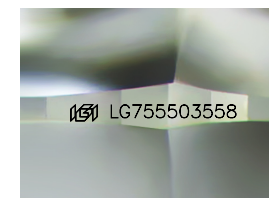
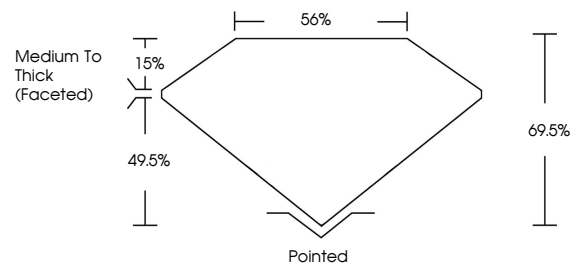
Carat Weight **2.51 CARATS**
Color Grade **FANCY VIVID GREEN BLUE**
Clarity Grade **SI 1**

ADDITIONAL GRADING INFORMATION

Polish **VERY GOOD**
Symmetry **VERY GOOD**
Fluorescence **NONE**
Inscription(s) **IGI LG755503558**

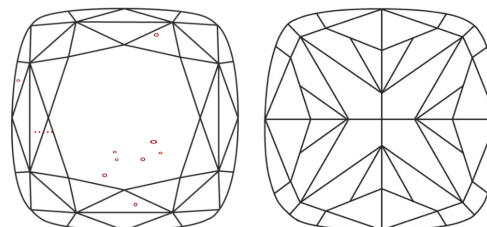
Comments: This Laboratory Grown Diamond was created by Chemical Vapor Deposition (CVD) growth process. Indications of post-growth treatment.

PROPORTIONS



Sample Image Used

CLARITY CHARACTERISTICS



KEY TO SYMBOLS

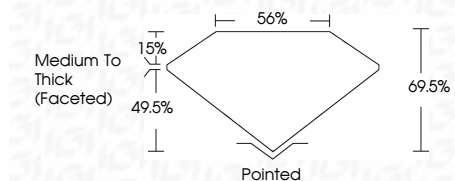
Red symbols indicate internal characteristics.
Green symbols indicate external characteristics.

COLOR

D E F G H I J Faint Very Light Light

CLARITY

FL	IF	VS ¹⁻²	VS ¹⁻²	SI ¹⁻²	I ¹⁻³
Flawless	Internally Flawless	Very Very Slightly Included	Very Slightly Included	Slightly Included	Included



ADDITIONAL GRADING INFORMATION

Polish **VERY GOOD**
Symmetry **VERY GOOD**
Fluorescence **NONE**
Inscription(s) **IGI LG755503558**
Comments: This Laboratory Grown Diamond was created by Chemical Vapor Deposition (CVD) growth process. Indications of post-growth treatment.



December 15, 2025
IGI Report No LG755503558
SQUARE CUSHION MODIFIED BRILLIANT
7.77 X 7.37 X 5.12 MM
2.51 CARATS
Carat Weight
Color Grade **FANCY VIVID GREEN BLUE**
Clarity Grade **SI 1**
Depth **49.5%**
Table **56%**
Girdle **Medium To Thick (Faceted)**
Culet **Pointed**
Polish **VERY GOOD**
Symmetry **VERY GOOD**
Fluorescence **NONE**
Inscription(s) **IGI LG755503558**
Comments: This Laboratory Grown Diamond was created by Chemical Vapor Deposition (CVD) growth process. Indications of post-growth treatment.