



February 19, 2026

IGI Report Number **LG754596690**

**ROUND BRILLIANT
LABORATORY GROWN DIAMOND
5.10 - 5.14 X 3.19 MM**

Carat Weight	0.52 CARAT
Color Grade	D
Clarity Grade	VVS 2
Cut Grade	IDEAL
Polish	EXCELLENT
Symmetry	EXCELLENT
Fluorescence	NONE
Inscription(s)	IGI LG754596690

Comments: As Grown - No indication of post-growth treatment. This Laboratory Grown Diamond was created by High Pressure High Temperature (HPHT) growth process. Type II

LABORATORY GROWN DIAMOND REPORT

February 19, 2026

IGI Report Number

LG754596690

Description

LABORATORY GROWN DIAMOND

Shape and Cutting Style

ROUND BRILLIANT

Measurements

5.10 - 5.14 X 3.19 MM

GRADING RESULTS

Carat Weight

0.52 CARAT

Color Grade

D

Clarity Grade

VVS 2

Cut Grade

IDEAL

ADDITIONAL GRADING INFORMATION

Polish

EXCELLENT

Symmetry

EXCELLENT

Fluorescence

NONE

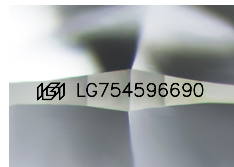
Inscription(s)

IGI LG754596690

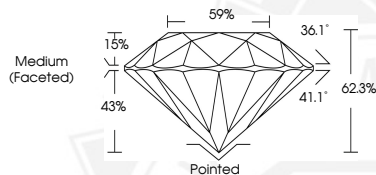
Comments: As Grown - No indication of post-growth treatment.

This Laboratory Grown Diamond was created by High Pressure High Temperature (HPHT) growth process.

Type II



Sample Image Used



February 19, 2026

IGI Report Number **LG754596690**

**ROUND BRILLIANT
LABORATORY GROWN DIAMOND
5.10 - 5.14 X 3.19 MM**

Carat Weight	0.52 CARAT
Color Grade	D
Clarity Grade	VVS 2
Cut Grade	IDEAL
Polish	EXCELLENT
Symmetry	EXCELLENT
Fluorescence	NONE
Inscription(s)	IGI LG754596690

Comments: As Grown - No indication of post-growth treatment. This Laboratory Grown Diamond was created by High Pressure High Temperature (HPHT) growth process. Type II



THIS DOCUMENT WAS PRODUCED WITH THE FOLLOWING SECURITY MEASURES: SPECIAL DOCUMENT PAPER, INK SCREENS, WATERMARK, BACKGROUND DESIGNS, HOLOGRAM AND OTHER SECURITY FEATURES NOT LISTED AND DO EXCEED DOCUMENT SECURITY INDUSTRY GUIDELINES.