



ELECTRONIC COPY

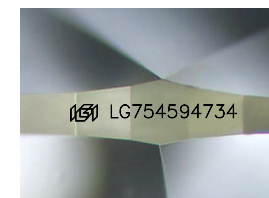
LG754594734
Report verification at igi.org



January 28, 2026
IGI Report Number **LG754594734**
Description **LABORATORY GROWN DIAMOND**

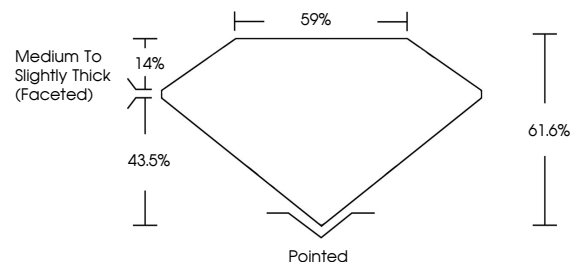
Shape and Cutting Style **OVAL BRILLIANT**
Measurements **14.84 X 10.25 X 6.31 MM**

GRADING RESULTS
Carat Weight **6.02 CARATS**
Color Grade **D**
Clarity Grade **FLAWLESS**

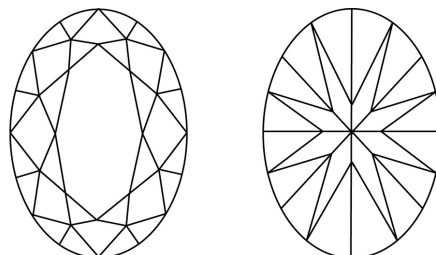


Sample Image Used

PROPORTIONS



CLARITY CHARACTERISTICS



KEY TO SYMBOLS

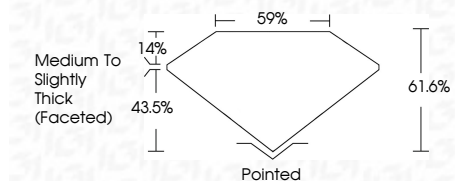
Red symbols indicate internal characteristics.
Green symbols indicate external characteristics.

COLOR

D E F G H I J Faint Very Light Light

CLARITY

FL	IF	VS ¹⁻²	VS ¹⁻²	SI ¹⁻²	I ¹⁻³
Flawless	Internally Flawless	Very Very Slightly Included	Very Slightly Included	Slightly Included	Included



ADDITIONAL GRADING INFORMATION

Polish **EXCELLENT**
Symmetry **EXCELLENT**
Fluorescence **NONE**
Inscription(s) **IGI LG754594734**
Comments: As Grown - No indication of post-growth treatment.
This Laboratory Grown Diamond was created by High Pressure High Temperature (HPHT) growth process.
Type II



January 28, 2026
IGI Report No LG754594734
OVAL BRILLIANT
14.84 X 10.25 X 6.31 MM
Carat Weight 6.02 CARATS
Color Grade D
Clarity Grade FLAWLESS
Depth 43.5%
Table 14%
Girdle Medium to Slightly Thick (Faceted)
Culet Pointed
Polish EXCELLENT
Symmetry EXCELLENT
Fluorescence NONE
Inscription(s) IGI LG754594734
Comments: As Grown - No indication of post-growth treatment.
This Laboratory Grown Diamond was created by High Pressure High Temperature (HPHT) growth process.
Type II