



ELECTRONIC COPY

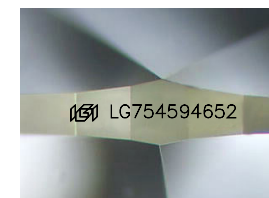
LG754594652
Report verification at igi.org



January 30, 2026
IGI Report Number **LG754594652**
Description **LABORATORY GROWN DIAMOND**

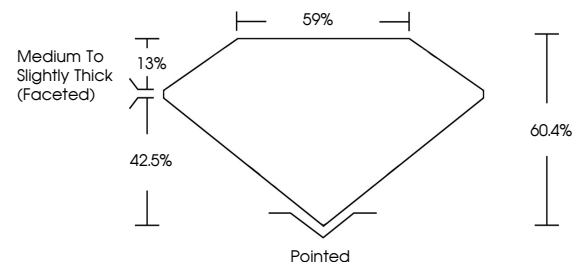
Shape and Cutting Style **OVAL BRILLIANT**
Measurements **13.34 X 9.04 X 5.46 MM**

GRADING RESULTS
Carat Weight **4.10 CARATS**
Color Grade **D**
Clarity Grade **FLAWLESS**

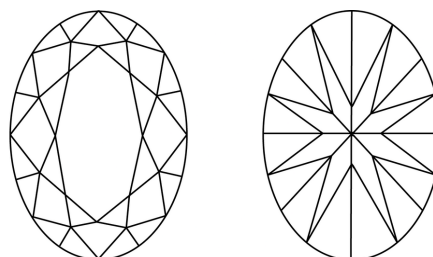


Sample Image Used

PROPORTIONS



CLARITY CHARACTERISTICS



KEY TO SYMBOLS

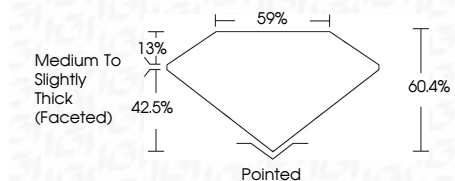
Red symbols indicate internal characteristics.
Green symbols indicate external characteristics.

COLOR

D E F G H I J Faint Very Light Light

CLARITY

| FL | IF | VS ¹⁻² | VS ¹⁻² | SI ¹⁻² | I ¹⁻³ |
|----------|---------------------|-----------------------------|------------------------|-------------------|------------------|
| Flawless | Internally Flawless | Very Very Slightly Included | Very Slightly Included | Slightly Included | Included |



ADDITIONAL GRADING INFORMATION

Polish **EXCELLENT**
Symmetry **EXCELLENT**
Fluorescence **NONE**
Inscription(s) **IGI LG754594652**
Comments: As Grown - No indication of post-growth treatment.
This Laboratory Grown Diamond was created by High Pressure High Temperature (HPHT) growth process.
Type II



January 30, 2026
IGI Report No LG754594652
OVAL BRILLIANT
13.34 X 9.04 X 5.46 MM
Carat Weight **4.10 CARATS**
Color Grade **D**
Clarity Grade **FLAWLESS**
Depth **60.4%**
Table **59%**
Girdle **Medium to Slightly Thick (Faceted)**
Culet **Pointed**
Polish **EXCELLENT**
Symmetry **EXCELLENT**
Fluorescence **NONE**
Inscription(s) **IGI LG754594652**
Comments: As Grown - No indication of post-growth treatment.
This Laboratory Grown Diamond was created by High Pressure High Temperature (HPHT) growth process.
Type II