

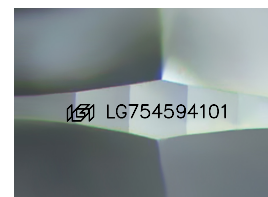
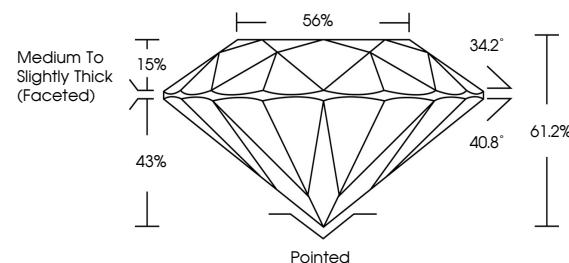


**ELECTRONIC COPY**

## LABORATORY GROWN DIAMOND REPORT

LG754594101  
Report verification at [igi.org](https://igi.org)

## PROPORTIONS



Sample Image Used

## CLARITY CHARACTERISTICS



## KEY TO SYMBOLS

Red symbols indicate internal characteristics.  
Green symbols indicate external characteristics.



**www.igi.org**

## LABORATORY GROWN DIAMOND REPORT



January 15, 2026

IGI Report Number **LG754594101**Description **LABORATORY GROWN DIAMOND**Shape and Cutting Style **ROUND BRILLIANT**

Measurements 10.20 - 10.25 X 6.26 MM

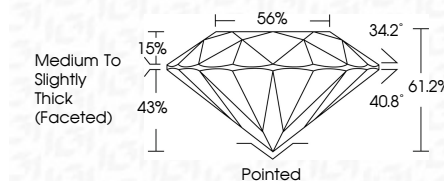
## GRADING RESULTS

Carat Weight 4.01 CARATS

Color Grade

Clarity Grade **INTERNALLY FLAWLESS**

Cut Grade **IDEAL**



### ADDITIONAL GRADING INFORMATION

Polish **EXCELLENT**Symmetry **EXCELLENT**Fluorescence **NONE**Inscription(s)  LG754594101

Comments: HEARTS & ARROWS

As Grown - No indication of post-growth treatment.

This Laboratory Grown Diamond was created by High Pressure High Temperature (HPHT) growth process.

Type II



January 15, 2026	4.01 CARATS
GI Report No. LG76594101	
ROUND BRILLIANT	
10.20 - 10.25 X 6.26 MM	
Carat Weight	
Color Grade	D
Clarity Grade	IF
Cut Grade	IDEAL
Depth	61.2%
Table	55%
Girdle	Medium to Slightly Thick (Faceted)
Culet	Pointed
Polish	EXCELLENT
Symmetry	EXCELLENT
Fluorescence	NONE
Inscriptions	lg91 LG76594101
Comments:	
4x6x3 - No indication of post-growth treatment.	
This Laboratory Grown Diamond was created by High Pressure High Temperature (HPHT) growth process.	

© IGI 2020, International Gemological Institute

FD - 10 20



THIS DOCUMENT WAS PRODUCED WITH THE FOLLOWING SECURITY MEASURES: SPECIAL DOCUMENT PAPER, INK SCREENS, WATERMARK, BACKGROUND DESIGNS, HOLOGRAM AND OTHER SECURITY FEATURES NOT LISTED AND DO EXCEED DOCUMENT SECURITY INDUSTRY GUIDELINES