

**ELECTRONIC COPY**

## LABORATORY GROWN DIAMOND REPORT

January 20, 2026	
IGI Report Number	LG754593530
Description	LABORATORY GROWN DIAMOND
Shape and Cutting Style	CUSHION MODIFIED BRILLIANT
Measurements	8.67 X 6.69 X 4.47 MM

## GRADING RESULTS

Carat Weight	1.91 CARAT
Color Grade	D
Clarity Grade	INTERNALLY FLAWLESS

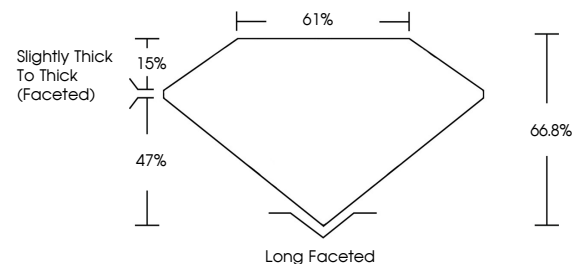
### ADDITIONAL GRADING INFORMATION

Polish	EXCELLENT
Symmetry	EXCELLENT
Fluorescence	NONE
Inscription(s)	 LG754593530

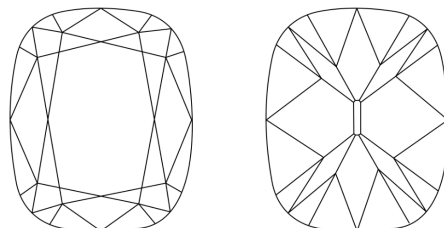
Comments: As Grown - No indication of post-growth treatment.  
This Laboratory Grown Diamond was created by High Pressure High Temperature (HPHT) growth process.  
Type II

LG754593530  
Report verification at [igi.org](https://igi.org)

## PROPORTIONS

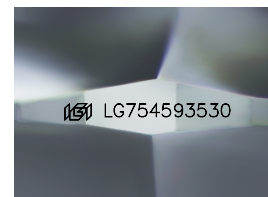


## CLARITY CHARACTERISTICS



### KEY TO SYMBOLS

Red symbols indicate internal characteristics.  
Green symbols indicate external characteristics.



Sample Image Used

## COLOR

D E F G H I J Faint Very Light Light

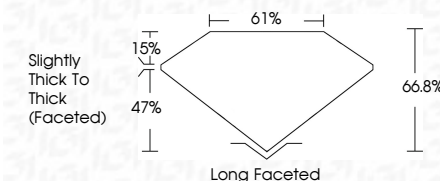
## CLARITY

FL	IF	VVS <sup>1-2</sup>	VS <sup>1-2</sup>	SI <sup>1-2</sup>	I <sup>1-3</sup>
Flawless	Internally Flawless	Very Very Slightly Included	Very Slightly Included	Slightly Included	Included

## LABORATORY GROWN DIAMOND REPORT



January 20, 2026	
IGI Report Number	LG754593530
Description	LABORATORY GROWN DIAMOND
Shape and Cutting Style	CUSHION MODIFIED BRILLIANT
Measurements	8.67 X 6.69 X 4.47 MM
<b>GRADING RESULTS</b>	
Carat Weight	1.91 CARAT
Color Grade	D
Clarity Grade	INTERNALLY FLAWLESS



### ADDITIONAL GRADING INFORMATION

Polish	EXCELLENT
Symmetry	EXCELLENT
Fluorescence	NONE
Inscription(s)	<del>(G)</del> LG754593530
Comments:	As Grown - No indication of post-growth treatment.
This Laboratory Grown Diamond was created by High Pressure High Temperature (HPHT) growth process.	
Type II	



January 20, 2026  
GI Report No LG754593530  
CUSHION MODIFIED BRILLIANT

<b>6.67 X 6.69 X 4.67 MM</b>	
Canal Weight	1.91 CARAT
Color Grade	D
Clarity Grade	IF
Depth	66.8%
Table	61%
Girdle	Slightly Thick to Thick (graded)
Quiet	Long Faceted
Polish	EXCELLENT
Symmetry	EXCELLENT
Fluorescence	NONE
Proportions (%)	See ICT#1459350

**Comments:**  
As Grown - No indication of post-growth treatment.  
This Laboratory Grown Diamond was created by High Pressure High temperature (HPHT) growth process.