



**INTERNATIONAL  
GEMOLOGICAL  
INSTITUTE**

**LABORATORY GROWN DIAMOND REPORT**

December 8, 2025  
 IGI Report Number **LG754592641**  
 Description **LABORATORY GROWN DIAMOND**  
 Shape and Cutting Style **ROUND BRILLIANT**  
 Measurements **5.13 - 5.18 X 3.20 MM**

**GRADING RESULTS**

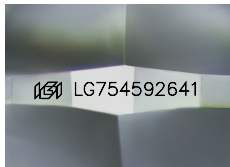
Carat Weight **0.53 CARAT**  
 Color Grade **D**  
 Clarity Grade **VS 1**  
 Cut Grade **EXCELLENT**

**ADDITIONAL GRADING INFORMATION**

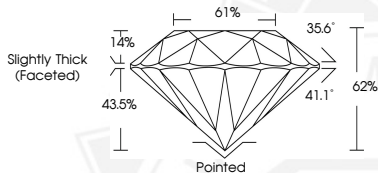
Polish **VERY GOOD**  
 Symmetry **VERY GOOD**  
 Fluorescence **NONE**  
 Inscription(s) **IGI LG754592641**

Comments: This Laboratory Grown Diamond was created by Chemical Vapor Deposition (CVD) growth process. Type IIa

**ELECTRONIC COPY**



Sample Image Used



December 8, 2025  
 IGI Report Number **LG754592641**  
**ROUND BRILLIANT**  
**LABORATORY GROWN DIAMOND**  
**5.13 - 5.18 X 3.20 MM**  
 Carat Weight **0.53 CARAT**  
 Color Grade **D**  
 Clarity Grade **VS 1**  
 Cut Grade **EXCELLENT**  
 Polish **VERY GOOD**  
 Symmetry **VERY GOOD**  
 Fluorescence **NONE**  
 Inscription(s) **IGI LG754592641**

Comments: This Laboratory Grown Diamond was created by Chemical Vapor Deposition (CVD) growth process. Type IIa



December 8, 2025  
 IGI Report Number **LG754592641**  
**ROUND BRILLIANT**  
**LABORATORY GROWN DIAMOND**  
**5.13 - 5.18 X 3.20 MM**  
 Carat Weight **0.53 CARAT**  
 Color Grade **D**  
 Clarity Grade **VS 1**  
 Cut Grade **EXCELLENT**  
 Polish **VERY GOOD**  
 Symmetry **VERY GOOD**  
 Fluorescence **NONE**  
 Inscription(s) **IGI LG754592641**

Comments: This Laboratory Grown Diamond was created by Chemical Vapor Deposition (CVD) growth process. Type IIa



THIS DOCUMENT WAS PRODUCED WITH THE FOLLOWING SECURITY MEASURES: SPECIAL DOCUMENT PAPER, INK SCREENS, WATERMARK, BACKGROUND DESIGNS, HOLOGRAM AND OTHER SECURITY FEATURES NOT LISTED AND DO EXCEED DOCUMENT SECURITY INDUSTRY GUIDELINES.

For terms & conditions and to verify this report, please visit [www.igi.org](http://www.igi.org)