



INTERNATIONAL GEMOLOGICAL INSTITUTE

ELECTRONIC COPY

LABORATORY GROWN DIAMOND REPORT

December 8, 2025
IGI Report Number **LG754592552**
Description **LABORATORY GROWN DIAMOND**
Shape and Cutting Style **ROUND BRILLIANT**
Measurements **5.68 - 5.72 X 3.48 MM**

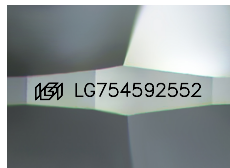
GRADING RESULTS

Carat Weight **0.70 CARAT**
Color Grade **E**
Clarity Grade **VS 2**
Cut Grade **IDEAL**

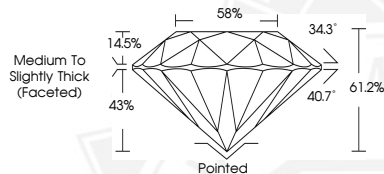
ADDITIONAL GRADING INFORMATION

Polish **VERY GOOD**
Symmetry **VERY GOOD**
Fluorescence **NONE**
Inscription(s) **IGI LG754592552**

Comments: This Laboratory Grown Diamond was created by
Chemical Vapor Deposition (CVD) growth process.
Type IIa



Sample Image Used



December 8, 2025

IGI Report Number **LG754592552**
ROUND BRILLIANT
LABORATORY GROWN DIAMOND
5.68 - 5.72 X 3.48 MM

Carat Weight **0.70 CARAT**
Color Grade **E**
Clarity Grade **VS 2**
Cut Grade **IDEAL**
Polish **VERY GOOD**
Symmetry **VERY GOOD**
Fluorescence **NONE**
Inscription(s) **IGI LG754592552**

Comments: This Laboratory Grown
Diamond was created by
Chemical Vapor Deposition (CVD)
growth process. Type IIa



December 8, 2025

IGI Report Number **LG754592552**
ROUND BRILLIANT
LABORATORY GROWN DIAMOND
5.68 - 5.72 X 3.48 MM

Carat Weight **0.70 CARAT**
Color Grade **E**
Clarity Grade **VS 2**
Cut Grade **IDEAL**
Polish **VERY GOOD**
Symmetry **VERY GOOD**
Fluorescence **NONE**
Inscription(s) **IGI LG754592552**

Comments: This Laboratory Grown
Diamond was created by
Chemical Vapor Deposition (CVD)
growth process. Type IIa



THIS DOCUMENT WAS PRODUCED WITH THE FOLLOWING SECURITY MEASURES: SPECIAL DOCUMENT PAPER, INK SCREENS, WATERMARK, BACKGROUND DESIGNS, HOLOGRAM AND OTHER SECURITY FEATURES NOT LISTED AND DO EXCEED DOCUMENT SECURITY INDUSTRY GUIDELINES.

For terms & conditions and to verify this report, please visit www.igi.org