



December 8, 2025

IGI Report Number **LG754592469**

**ROUND BRILLIANT
LABORATORY GROWN DIAMOND
5.15 - 5.19 X 3.22 MM**

Carat Weight	0.55 CARAT
Color Grade	D
Clarity Grade	VVS 2
Cut Grade	VERY GOOD
Polish	VERY GOOD
Symmetry	VERY GOOD
Fluorescence	NONE
Inscription(s)	IGI LG754592469

Comments: This Laboratory Grown Diamond was created by Chemical Vapor Deposition (CVD) growth process. Type IIa

LABORATORY GROWN DIAMOND REPORT

December 8, 2025
 IGI Report Number **LG754592469**
 Description **LABORATORY GROWN DIAMOND**
 Shape and Cutting Style **ROUND BRILLIANT**
 Measurements **5.15 - 5.19 X 3.22 MM**

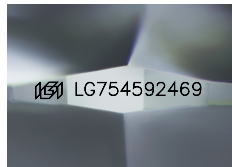
GRADING RESULTS

Carat Weight **0.55 CARAT**
 Color Grade **D**
 Clarity Grade **VVS 2**
 Cut Grade **VERY GOOD**

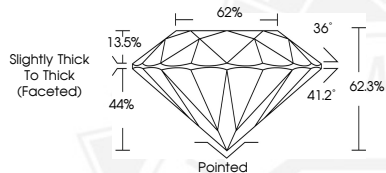
ADDITIONAL GRADING INFORMATION

Polish **VERY GOOD**
 Symmetry **VERY GOOD**
 Fluorescence **NONE**
 Inscription(s) **IGI LG754592469**

Comments: This Laboratory Grown Diamond was created by Chemical Vapor Deposition (CVD) growth process. Type IIa



Sample Image Used



December 8, 2025

IGI Report Number **LG754592469**

**ROUND BRILLIANT
LABORATORY GROWN DIAMOND
5.15 - 5.19 X 3.22 MM**

Carat Weight	0.55 CARAT
Color Grade	D
Clarity Grade	VVS 2
Cut Grade	VERY GOOD
Polish	VERY GOOD
Symmetry	VERY GOOD
Fluorescence	NONE
Inscription(s)	IGI LG754592469

Comments: This Laboratory Grown Diamond was created by Chemical Vapor Deposition (CVD) growth process. Type IIa



THIS DOCUMENT WAS PRODUCED WITH THE FOLLOWING SECURITY MEASURES: SPECIAL DOCUMENT PAPER, INK SCREENS, WATERMARK, BACKGROUND DESIGNS, HOLOGRAM AND OTHER SECURITY FEATURES NOT LISTED AND DO EXCEED DOCUMENT SECURITY INDUSTRY GUIDELINES.