



ELECTRONIC COPY

LABORATORY GROWN DIAMOND REPORT

December 12, 2025  
 IGI Report Number **LG754592094**  
 Description **LABORATORY GROWN DIAMOND**  
 Shape and Cutting Style **ROUND BRILLIANT**  
 Measurements **9.30 - 9.35 X 5.68 MM**

**GRADING RESULTS**

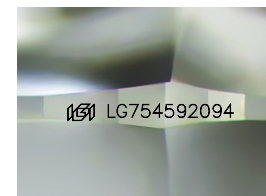
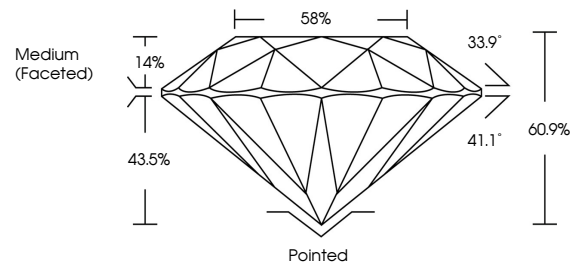
Carat Weight **3.00 CARATS**  
 Color Grade **E**  
 Clarity Grade **VVS 2**  
 Cut Grade **IDEAL**

ADDITIONAL GRADING INFORMATION

Polish **EXCELLENT**  
 Symmetry **EXCELLENT**  
 Fluorescence **NONE**  
 Inscription(s) **IGI LG754592094**

Comments: HEARTS & ARROWS  
 This Laboratory Grown Diamond was created by Chemical Vapor Deposition (CVD) growth process.

PROPORTIONS



Sample Image Used

COLOR

D E F G H I J Faint Very Light Light

CLARITY

FL	IF	VVS <sup>1-2</sup>	VS <sup>1-2</sup>	SI <sup>1-2</sup>	I <sup>1-3</sup>
Flawless	Internally Flawless	Very Very Slightly Included	Very Slightly Included	Slightly Included	Included



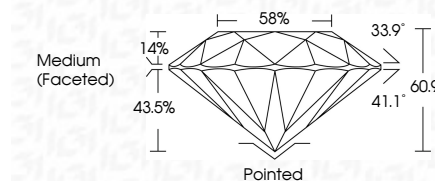
December 12, 2025  
 IGI Report Number **LG754592094**  
 Description **LABORATORY GROWN DIAMOND**  
 Shape and Cutting Style **ROUND BRILLIANT**  
 Measurements **9.30 - 9.35 X 5.68 MM**

**GRADING RESULTS**

Carat Weight **3.00 CARATS**  
 Color Grade **E**  
 Clarity Grade **VVS 2**  
 Cut Grade **IDEAL**

ADDITIONAL GRADING INFORMATION

Polish **EXCELLENT**  
 Symmetry **EXCELLENT**  
 Fluorescence **NONE**  
 Inscription(s) **IGI LG754592094**  
 Comments: HEARTS & ARROWS  
 This Laboratory Grown Diamond was created by Chemical Vapor Deposition (CVD) growth process.



December 12, 2025  
 IGI Report No **LG754592094**  
**ROUND BRILLIANT**

**3.00 CARATS**  
 Carat Weight  
**E**  
 Color Grade  
**VVS 2**  
 Clarity Grade  
**IDEAL**  
 Cut Grade  
**60.9%**  
 Depth  
**88%**  
 Girdle  
**Medium (Faceted)**

Culet **Pointed**  
 Polish **EXCELLENT**  
 Symmetry **EXCELLENT**  
 Fluorescence **NONE**  
 Inscription(s) **IGI LG754592094**

Comments: **Hearts & Arrows**  
 This Laboratory Grown Diamond was created by Chemical Vapor Deposition (CVD) growth process.