



ELECTRONIC COPY

LG754591983
Report verification at igi.org

Report verification at igi.org

LABORATORY GROWN DIAMOND REPORT



December 18, 2025

IGI Report Number **LG754591983**Description **LABORATORY GROWN DIAMOND**Shape and Cutting Style **ROUND BRILLIANT**

Measurements 8.02 - 8.07 X 4.93 MM

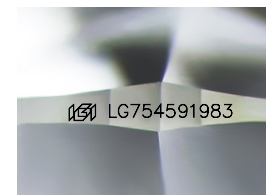
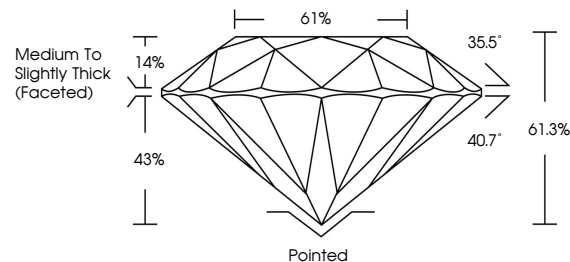
GRADING RESULTS

Carat Weight **2.01 CARATS**

Color Grade

Clarity Grade **INTERNALLY FLAWLESS**

Cut Grade **EXCELLENT**



Sample Image Used

COLOR

D E F G H I J Faint Very Light Light

CLARITY

FL IF WS¹⁻² VS¹⁻² S¹⁻² |¹⁻³

Flawless	Internally Flawless	Very Very Slightly Included	Very Slightly Included	Slightly Included	Included
----------	---------------------	-----------------------------	------------------------	-------------------	----------

ADDITIONAL GRADING INFORMATION

Polish **EXCELLENT**Symmetry **EXCELLENT**Fluorescence **NONE**Inscription(s) LG754591983

Comments: This Laboratory Grown Diamond was created by Chemical Vapor Deposition (CVD) growth process.
Type IIa



© IGI 2020, International Gemological Institute

FD - 10 20

www.igi.org



THIS DOCUMENT WAS PRODUCED WITH THE FOLLOWING SECURITY MEASURES: SPECIAL DOCUMENT PAPER, INK SCREENS, WATERMARK, BACKGROUND DESIGNS, HOLOGRAM AND OTHER SECURITY FEATURES NOT LISTED AND DO EXCEED DOCUMENT SECURITY INDUSTRY GUIDELINE

December 18, 2025
IGI Report No LG754591983
ROUND BRILLIANT

ROUND BRILLIANT		2.01 CARATS	
		Color Weight	
		Color Grade	
		Clarity Grade	
		Cut Grade	
	Depth	IF	EXCELLENT
	Table	61.3%	
	Girdle	61%	
		Medium To Slightly Thick Facetwork	
	Culet	Pointed	
	Polish	EXCELLENT	
	Symmetry	EXCELLENT	
	Fluorescence	NONE	
	Comments	see Certificate	

Comments:
This Laboratory Grown Diamond was created by Chemical Vapor Deposition (CVD) growth process.