



LABORATORY GROWN DIAMOND REPORT

February 3, 2026
 IGI Report Number **LG754589056**
 Description **LABORATORY GROWN DIAMOND**
 Shape and Cutting Style **OVAL BRILLIANT**
 Measurements **7.70 X 5.40 X 3.43 MM**

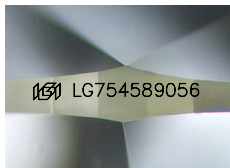
GRADING RESULTS

Carat Weight **0.88 CARAT**
 Color Grade **E**
 Clarity Grade **VS 2**

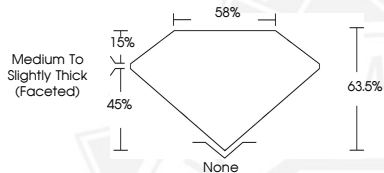
ADDITIONAL GRADING INFORMATION

Polish **GOOD**
 Symmetry **VERY GOOD**
 Fluorescence **NONE**
 Inscription(s) **IGI LG754589056**

Comments: This Laboratory Grown Diamond was created by
 Chemical Vapor Deposition (CVD) growth process.
 Type IIa



Sample Image Used



February 3, 2026
 IGI Report Number **LG754589056**
OVAL BRILLIANT
LABORATORY GROWN DIAMOND
7.70 X 5.40 X 3.43 MM
 Carat Weight **0.88 CARAT**
 Color Grade **E**
 Clarity Grade **VS 2**
 Polish **GOOD**
 Symmetry **VERY GOOD**
 Fluorescence **NONE**
 Inscription(s) **IGI LG754589056**

Comments: This Laboratory Grown
 Diamond was created by
 Chemical Vapor Deposition (CVD)
 growth process. Type IIa



February 3, 2026
 IGI Report Number **LG754589056**
OVAL BRILLIANT
LABORATORY GROWN DIAMOND
7.70 X 5.40 X 3.43 MM
 Carat Weight **0.88 CARAT**
 Color Grade **E**
 Clarity Grade **VS 2**
 Polish **GOOD**
 Symmetry **VERY GOOD**
 Fluorescence **NONE**
 Inscription(s) **IGI LG754589056**

Comments: This Laboratory Grown
 Diamond was created by
 Chemical Vapor Deposition (CVD)
 growth process. Type IIa



THIS DOCUMENT WAS PRODUCED WITH THE FOLLOWING SECURITY MEASURES: SPECIAL DOCUMENT PAPER, INK SCREENS, WATERMARK, BACKGROUND DESIGNS, HOLOGRAM AND OTHER SECURITY FEATURES NOT LISTED AND DO EXCEED DOCUMENT SECURITY INDUSTRY GUIDELINES.