



LABORATORY GROWN DIAMOND REPORT

February 9, 2026
 IGI Report Number **LG754588006**
 Description **LABORATORY GROWN DIAMOND**
 Shape and Cutting Style **EMERALD CUT**
 Measurements **6.36 X 4.28 X 3.04 MM**

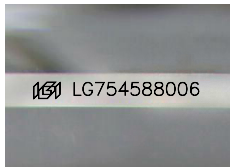
GRADING RESULTS

Carat Weight **0.84 CARAT**
 Color Grade **FANCY LIGHT YELLOWISH GRAY**
 Clarity Grade **SI 1**

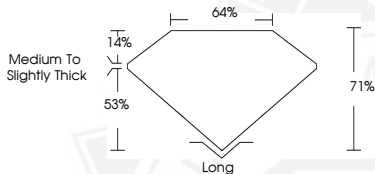
ADDITIONAL GRADING INFORMATION

Polish **VERY GOOD**
 Symmetry **VERY GOOD**
 Fluorescence **NONE**
 Inscription(s) **IGI LG754588006**

Comments: This Laboratory Grown Diamond was created by Chemical Vapor Deposition (CVD) growth process.



Sample Image Used



February 9, 2026
 IGI Report Number **LG754588006**
EMERALD CUT
LABORATORY GROWN DIAMOND
6.36 X 4.28 X 3.04 MM
 Carat Weight **0.84 CARAT**
 Color Grade **FANCY LIGHT YELLOWISH GRAY**
 Clarity Grade **SI 1**
 Polish **VERY GOOD**
 Symmetry **VERY GOOD**
 Fluorescence **NONE**
 Inscription(s) **IGI LG754588006**
 Comments: This Laboratory Grown Diamond was created by Chemical Vapor Deposition (CVD) growth process.



February 9, 2026
 IGI Report Number **LG754588006**
EMERALD CUT
LABORATORY GROWN DIAMOND
6.36 X 4.28 X 3.04 MM
 Carat Weight **0.84 CARAT**
 Color Grade **FANCY LIGHT YELLOWISH GRAY**
 Clarity Grade **SI 1**
 Polish **VERY GOOD**
 Symmetry **VERY GOOD**
 Fluorescence **NONE**
 Inscription(s) **IGI LG754588006**
 Comments: This Laboratory Grown Diamond was created by Chemical Vapor Deposition (CVD) growth process.



THIS DOCUMENT WAS PRODUCED WITH THE FOLLOWING SECURITY MEASURES: SPECIAL DOCUMENT PAPER, INK SCREENS, WATERMARK, BACKGROUND DESIGNS, HOLOGRAM AND OTHER SECURITY FEATURES NOT LISTED AND DO EXCEED DOCUMENT SECURITY INDUSTRY GUIDELINES.