



LABORATORY GROWN DIAMOND REPORT

January 27, 2026
 IGI Report Number **LG754587747**
 Description **LABORATORY GROWN DIAMOND**
 Shape and Cutting Style **PEAR BRILLIANT**
 Measurements **7.59 X 5.24 X 3.44 MM**

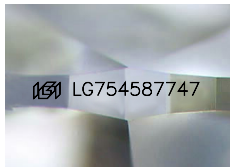
GRADING RESULTS

Carat Weight **0.92 CARAT**
 Color Grade **FANCY LIGHT YELLOW**
 Clarity Grade **VVS 2**

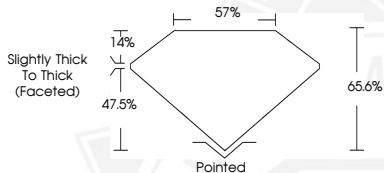
ADDITIONAL GRADING INFORMATION

Polish **EXCELLENT**
 Symmetry **EXCELLENT**
 Fluorescence **NONE**
 Inscription(s) **IGI LG754587747**

Comments: This Laboratory Grown Diamond was created by Chemical Vapor Deposition (CVD) growth process.



Sample Image Used



January 27, 2026
 IGI Report Number **LG754587747**
 PEAR BRILLIANT
 LABORATORY GROWN DIAMOND
 7.59 X 5.24 X 3.44 MM
 Carat Weight **0.92 CARAT**
 Color Grade **FANCY LIGHT YELLOW**
 Clarity Grade **VVS 2**
 Polish **EXCELLENT**
 Symmetry **EXCELLENT**
 Fluorescence **NONE**
 Inscription(s) **IGI LG754587747**
 Comments: This Laboratory Grown Diamond was created by Chemical Vapor Deposition (CVD) growth process.



January 27, 2026
 IGI Report Number **LG754587747**
 PEAR BRILLIANT
 LABORATORY GROWN DIAMOND
 7.59 X 5.24 X 3.44 MM
 Carat Weight **0.92 CARAT**
 Color Grade **FANCY LIGHT YELLOW**
 Clarity Grade **VVS 2**
 Polish **EXCELLENT**
 Symmetry **EXCELLENT**
 Fluorescence **NONE**
 Inscription(s) **IGI LG754587747**
 Comments: This Laboratory Grown Diamond was created by Chemical Vapor Deposition (CVD) growth process.



THIS DOCUMENT WAS PRODUCED WITH THE FOLLOWING SECURITY MEASURES: SPECIAL DOCUMENT PAPER, INK SCREENS, WATERMARK, BACKGROUND DESIGNS, HOLOGRAM AND OTHER SECURITY FEATURES NOT LISTED AND DO EXCEED DOCUMENT SECURITY INDUSTRY GUIDELINES.