

ELECTRONIC COPY

LABORATORY GROWN DIAMOND REPORT

| | |
|-------------------------|--------------------------|
| December 10, 2025 | |
| IGI Report Number | LG754586109 |
| Description | LABORATORY GROWN DIAMOND |
| Shape and Cutting Style | ROUND BRILLIANT |
| Measurements | 6.60 - 6.66 X 4.03 MM |
| GRADING RESULTS | |
| Carat Weight | 1.08 CARAT |
| Color Grade | D |
| Clarity Grade | VVS 2 |
| Cut Grade | IDEAL |

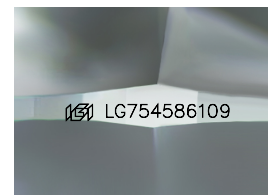
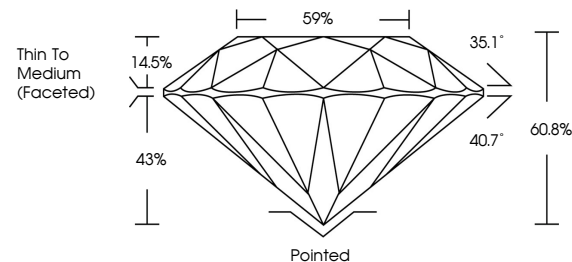
ADDITIONAL GRADING INFORMATION

| | |
|----------------|-----------------|
| Polish | EXCELLENT |
| Symmetry | EXCELLENT |
| Fluorescence | NONE |
| Inscription(s) | 151 LG754586109 |

Comments: As Grown - No indication of post-growth treatment.
This Laboratory Grown Diamond was created by High Pressure High Temperature (HPHT) growth process.
Type II

LG754586109
Report verification at igi.org

PROPORTIONS



Sample Image Used

COLOR

D E F G H I J Faint Very Light Light

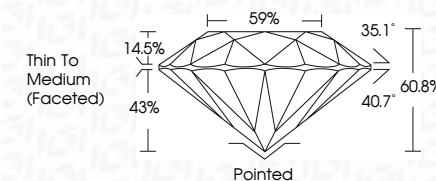
CLARITY

| FL | IF | VVS ¹⁻² | VS ¹⁻² | SI ¹⁻² | I ¹⁻³ |
|----------|---------------------|-----------------------------|------------------------|-------------------|------------------|
| Flawless | Internally Flawless | Very Very Slightly Included | Very Slightly Included | Slightly Included | Included |

LABORATORY GROWN DIAMOND REPORT



| | |
|-------------------------|--------------------------|
| December 10, 2025 | |
| IGI Report Number | LG754586109 |
| Description | LABORATORY GROWN DIAMOND |
| Shape and Cutting Style | ROUND BRILLIANT |
| Measurements | 6.60 - 6.66 X 4.03 MM |
| GRADING RESULTS | |
| Carat Weight | 1.08 CARAT |
| Color Grade | D |
| Clarity Grade | VVS 2 |
| Cut Grade | IDEAL |



ADDITIONAL GRADING INFORMATION

| | |
|--|----------------------------|
| Polish | EXCELLENT |
| Symmetry | EXCELLENT |
| Fluorescence | NONE |
| Inscription(s) | (G) LG754586109 |
| Comments: As Grown - No indication of post-growth treatment. | |
| This Laboratory Grown Diamond was created by High Pressure High Temperature (HPHT) growth process. | |
| Type II | |



December 10, 2025
 IGI Report No LG754586109
 ROUND BRILLIANT

| | | |
|-----------------------|---------------|--------------------------|
| 6.60 - 6.66 X 0.03 MM | Carat Weight | 1.08 CARAT |
| | Color Grade | D |
| | Clarity Grade | VVS 2 |
| | Cut Grade | IDEAL |
| | Depth | 60.9% |
| | Table | 59% |
| | Grade | Thin To Medium (faceted) |
| | Culet | Pointed |
| | Polish | EXCELLENT |
| | Symmetry | EXCELLENT |
| | Fluorescence | NONE |
| | Report# | 444112741636100 |

Comments:
As Grown - No Indication of post-growth Treatment.
This Laboratory Grown Diamond was created by High Pressure High Temperature (HPHT) growth process.