



ELECTRONIC COPY

LABORATORY GROWN DIAMOND REPORT

LG754584105
Report verification at igi.org

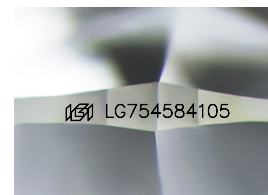
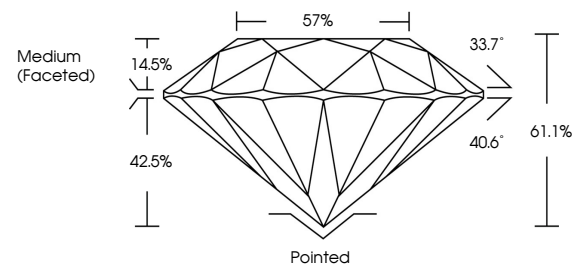
December 12, 2025	
IGI Report Number	LG754584105
Description	LABORATORY GROWN DIAMOND
Shape and Cutting Style	ROUND BRILLIANT
Measurements	7.40 - 7.44 X 4.54 MM
GRADING RESULTS	
Carat Weight	1.54 CARAT
Color Grade	D
Clarity Grade	VVS 1
Cut Grade	IDEAL

ADDITIONAL GRADING INFORMATION

Polish	EXCELLENT
Symmetry	EXCELLENT
Fluorescence	NONE
Inscription(s)	15 LG754584105

Comments: As Grown - No indication of post-growth treatment.
This Laboratory Grown Diamond was created by High Pressure High Temperature (HPHT) growth process.
Type II

PROPORTIONS



Sample Image Used

COLOR

D E F G H I J Faint Very Light Light

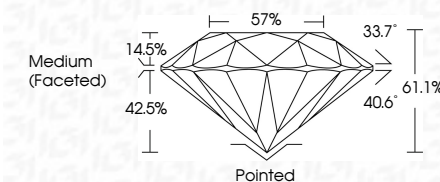
CLARITY

FL	IF	VVS ¹⁻²	VS ¹⁻²	SI ¹⁻²	I ¹⁻³
Flawless	Internally Flawless	Very Very Slightly Included	Very Slightly Included	Slightly Included	Included


LABORATORY GROWN DIAMOND REPORT



December 12, 2025	
IGI Report Number	LG754584105
Description	LABORATORY GROWN DIAMOND
Shape and Cutting Style	ROUND BRILLIANT
Measurements	7.40 - 7.44 X 4.54 MM
GRADING RESULTS	
Carat Weight	1.54 CARAT
Color Grade	D
Clarity Grade	VVS 1
Cut Grade	IDEAL



ADDITIONAL GRADING INFORMATION

Polish	EXCELLENT
Symmetry	EXCELLENT
Fluorescence	NONE
Inscription(s)	 LG754584105
<p>Comments: As Grown - No indication of post-growth treatment.</p> <p>This Laboratory Grown Diamond was created by High Pressure High Temperature (HPHT) growth process.</p> <p>Type II</p>	



© IGI 2020, International Gemological Institute

FD - 10 20

www.igi.org



THIS DOCUMENT WAS PRODUCED WITH THE FOLLOWING SECURITY MEASURES: SPECIAL DOCUMENT PAPER, INK SCREENS, WATERMARK, BACKGROUND DESIGNS, HOLOGRAM AND OTHER SECURITY FEATURES NOT LISTED AND DO EXCEED DOCUMENT SECURITY INDUSTRY GUIDELINE

December 12, 2025
 IGI Report No LG754584105
 ROUND BRILLIANT

7.40 - 7.44 X 4.54 MM

7.40 - 7.44 X 4.54 MM
1.54 CARAT

[illegible]

Clarity Grade	WS 1
FL	100%
IF	95%
VVS1	85%
VVS2	75%
VS1	65%
VS2	55%
SI1	45%
SI2	35%
I1	25%
I2	15%
I3	5%

Depth	61.1%
100	100
200	100
300	100
400	100
500	100
600	100
700	100
800	100
900	100
1000	100
1100	100
1200	100
1300	100
1400	100
1500	100
1600	100
1700	100
1800	100
1900	100
2000	100
2100	100
2200	100
2300	100
2400	100
2500	100
2600	100
2700	100
2800	100
2900	100
3000	100
3100	100
3200	100
3300	100
3400	100
3500	100
3600	100
3700	100
3800	100
3900	100
4000	100
4100	100
4200	100
4300	100
4400	100
4500	100
4600	100
4700	100
4800	100
4900	100
5000	100
5100	100
5200	100
5300	100
5400	100
5500	100
5600	100
5700	100
5800	100
5900	100
6000	100
6100	100
6200	100
6300	100
6400	100
6500	100
6600	100
6700	100
6800	100
6900	100
7000	100
7100	100
7200	100
7300	100
7400	100
7500	100
7600	100
7700	100
7800	100
7900	100
8000	100
8100	100
8200	100
8300	100
8400	100
8500	100
8600	100
8700	100
8800	100
8900	100
9000	100
9100	100
9200	100
9300	100
9400	100
9500	100
9600	100
9700	100
9800	100
9900	100
10000	100

Girdle

Culet	Pointed
-------	---------

Symmetry

Inscription(s)

Comments:
As Grown - No indication of post-growth

**This Laboratory Grown Diamond was
Created by High Pressure High**

created by High Pressure High Temperature (HPHT) growth process.