

ELECTRONIC COPY

LABORATORY GROWN DIAMOND REPORT

December 12, 2025	
IGI Report Number	LG754584028
Description	LABORATORY GROWN DIAMOND
Shape and Cutting Style	ROUND BRILLIANT
Measurements	6.79 - 6.83 X 4.17 MM
GRADING RESULTS	
Carat Weight	1.19 CARAT
Color Grade	D
Clarity Grade	VVS 2
Cut Grade	IDEAL

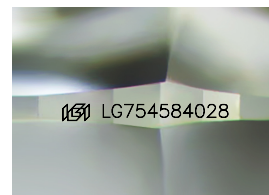
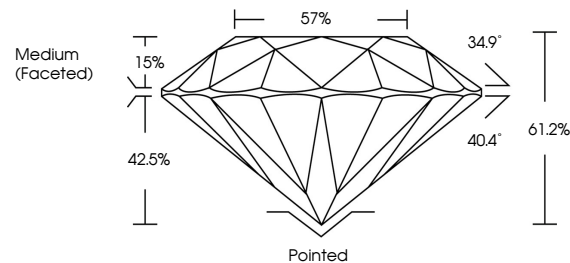
ADDITIONAL GRADING INFORMATION

Polish	EXCELLENT
Symmetry	EXCELLENT
Fluorescence	NONE
Inscription(s)	16 LG754584028

Comments: As Grown - No indication of post-growth treatment.
This Laboratory Grown Diamond was created by High Pressure High Temperature (HPHT) growth process.
Type II

LG754584028
Report verification at igi.org

PROPORTIONS



Sample Image Used

COLOR

D E F G H I J Faint Very Light Light

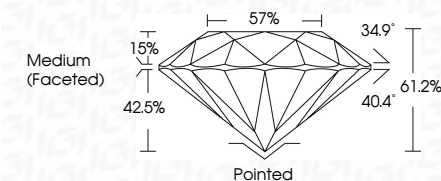
CLARITY

FL	IF	VVS ¹⁻²	VS ¹⁻²	SI ¹⁻²	I ¹⁻³
Flawless	Internally Flawless	Very Very Slightly Included	Very Slightly Included	Slightly Included	Included

LABORATORY GROWN DIAMOND REPORT



December 12, 2025	
IGI Report Number	LG754584028
Description	LABORATORY GROWN DIAMOND
Shape and Cutting Style	ROUND BRILLIANT
Measurements	6.79 - 6.83 X 4.17 MM
GRADING RESULTS	
Carat Weight	1.19 CARAT
Color Grade	D
Clarity Grade	VVS 2
Cut Grade	IDEAL



ADDITIONAL GRADING INFORMATION

Polish	EXCELLENT
Symmetry	EXCELLENT
Fluorescence	NONE
Inscription(s)	(G) LG754584028
<p>Comments: As Grown - No indication of post-growth treatment.</p> <p>This Laboratory Grown Diamond was created by High Pressure High Temperature (HPHT) growth process.</p> <p>Type II</p>	



© IGI 2020, International Gemological Institute

FD - 10 20

December 12, 2025
 LGI Report No LG754584028

Report No G16745694028	1.19 CARAT	VVS 2	61.2%	57%	Medium (Faceted)	Polished	EXCELLENT	EXCELLENT	NONE
ROUND BRILLIANT	5.79 - 6.88 X 4.17 MM	Color Weight	Color Grade	Clarity Grade	Depth	Culet	Polish	Symmetry	Fluorescence
				Our Grade	Table				
				Our Grade	Girdle				

Comments:
As Grown - No Indication of post-growth treatment.
This Laboratory Grown Diamond was created by High Pressure High Temperature (HPHT) growth process.