



**INTERNATIONAL
GEMOLOGICAL
INSTITUTE**

ELECTRONIC COPY

LABORATORY GROWN DIAMOND REPORT

December 9, 2025	
IGI Report Number	LG754583692
Description	LABORATORY GROWN DIAMOND
Shape and Cutting Style	PRINCESS CUT
Measurements	7.95 X 7.91 X 5.65 MM

GRADING RESULTS

Carat Weight	3.08 CARATS
Color Grade	F
Clarity Grade	VS 1

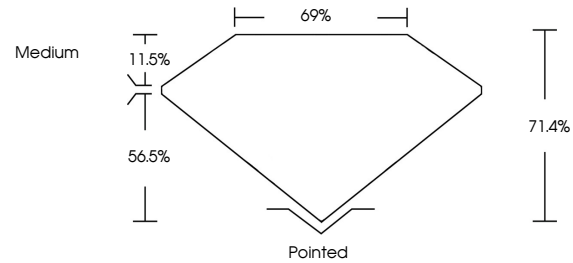
ADDITIONAL GRADING INFORMATION

Polish	EXCELLENT
Symmetry	EXCELLENT
Fluorescence	NONE
Inscription(s)	 LG754583692

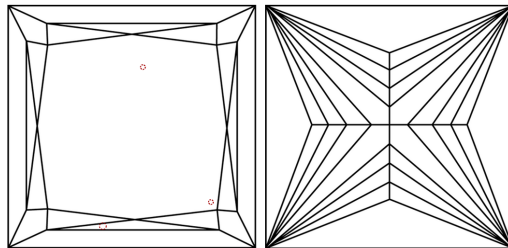
Comments: This Laboratory Grown Diamond was created by Chemical Vapor Deposition (CVD) growth process.
Type IIa

LG754583692
Report verification at igi.org

PROPORTIONS

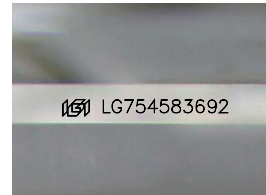


CLARITY CHARACTERISTICS



KEY TO SYMBOLS

Red symbols indicate internal characteristics.
Green symbols indicate external characteristics.



Sample Image Used

COLOR

D E F G H I J Faint Very Light Light

CLARITY

FL	IF	VVS ¹⁻²	VS ¹⁻²	SI ¹⁻²	I ¹⁻³
Flawless	Internally Flawless	Very Very Slightly Included	Very Slightly Included	Slightly Included	Included

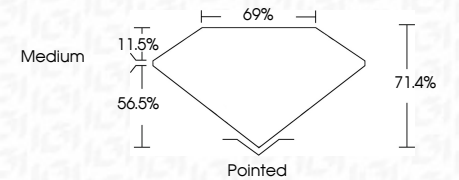
LABORATORY GROWN DIAMOND REPORT



December 9, 2025	
IGI Report Number	LG754583692
Description	LABORATORY GROWN DIAMOND
Shape and Cutting Style	PRINCESS CUT
Measurements	7.95 X 7.91 X 5.65 MM

GRADING RESULTS

Carat Weight	3.08 CARATS
Color Grade	F
Clarity Grade	VS 1



ADDITIONAL GRADING INFORMATION

Polish	EXCELLENT
Symmetry	EXCELLENT
Fluorescence	NONE
Inscription(s)	(S) LG754583692
Comments: This Laboratory Grown Diamond was created by Chemical Vapor Deposition (CVD) growth process.	
Type IIa	



IGI



© IGI 2020, International Gemological Institute

FD - 10 20

www.igi.org

THIS DOCUMENT WAS PRODUCED WITH THE FOLLOWING SECURITY MEASURES: SPECIAL DOCUMENT PAPER, INK SCREENS, WATERMARK, BACKGROUND DESIGNS, HOLOGRAM AND OTHER SECURITY FEATURES NOT LISTED AND DO EXCEED DOCUMENT SECURITY INDUSTRY GUIDELINES

December 9, 2025
IGI Report No LG754583692

7.95 X 9.1 X 5.65 MM	3.08 CARATS
Carat Weight	F
Color Grade	VS 1
Clarity Grade	71.4%
Depth	69%
Table	Medium
Girdle	
Culet	Pointed
Polish	EXCELLENT
Symmetry	EXCELLENT
Fluorescence	NONE

Comments:
This Laboratory Grown Diamond was created by Chemical Vapor Deposition (CVD) growth process.
Type IIa